

elecworks™ Tips & Tricks

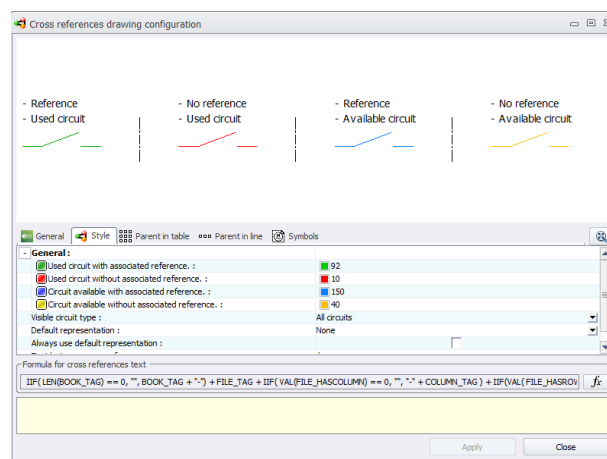
Creating a User definable Cross Reference Style

As an example you may wish to change the colour that is associated to a contact when a contact is used or not used and has or hasn't an associated manufacturer's part assignment?

How are these changed and what else is configurable with regards to cross reference style?

Right-click over the *Project* and select *Configurations* > 

The following dialogue will be shown



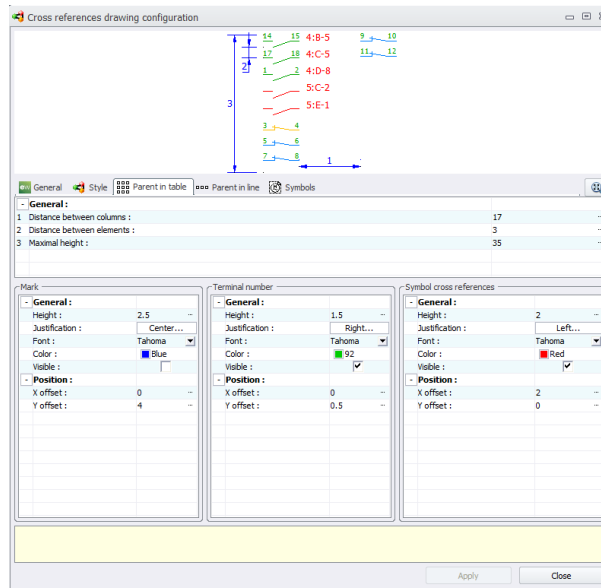
In the example above, the colour definition for the different circuit types could become confusing especially when some colours appear similar or when the print colour looks similar.

You can double left-click on the colour to change the colour properties.

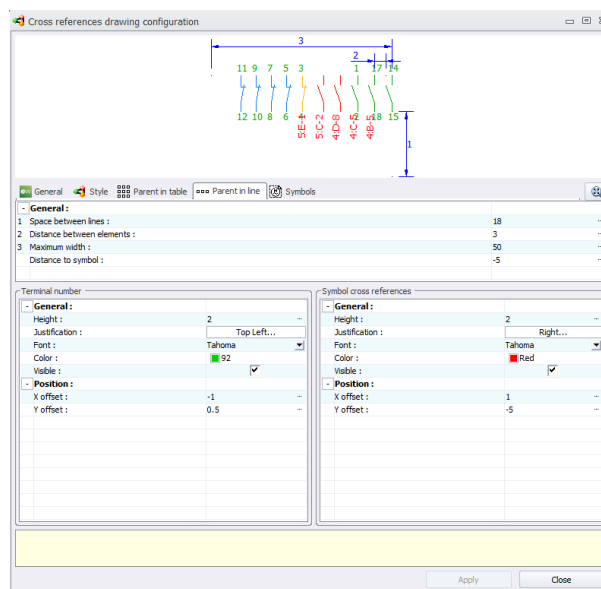
By selecting in each *Tab* of the dialogue, you can configure the cross referencing to your specific company or client specific standards.



Selecting *Parent Tab* allows the user to define the label e.g. K1, terminal & cross reference text height and colour. It also allows the positioning of the cross reference information to be manipulated.

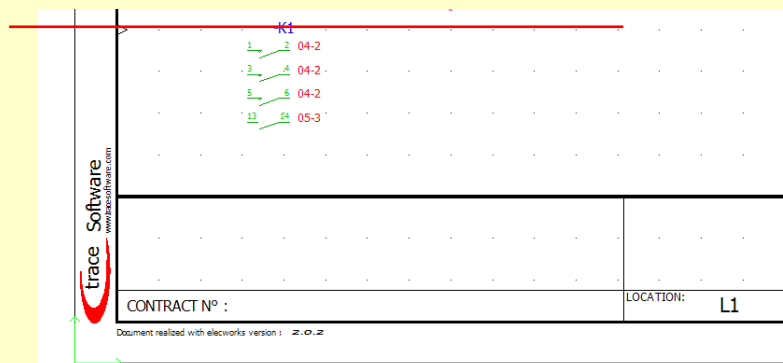


Selecting *Parent In-Line Tab* allows the user a similar set of options to above where you can change the cross reference information that defines the terminal & cross reference text height and colour. It also allows the positioning of the cross reference information to be manipulated.




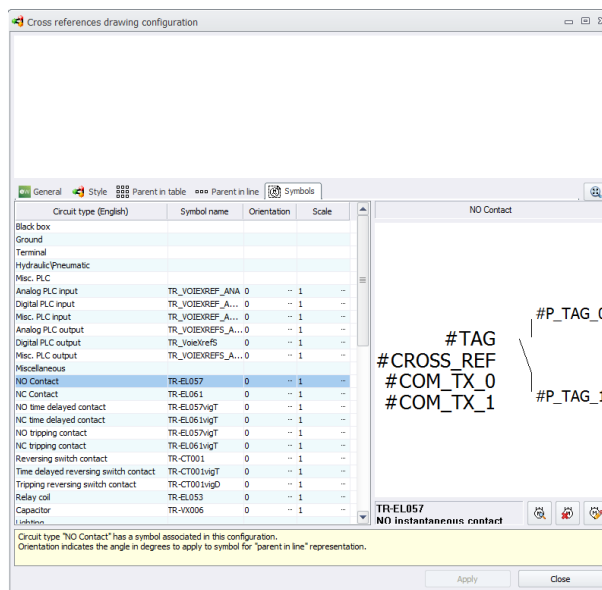
Parent (Master): If the parent device is moved, the cross reference information moves with the parent device and does not lose its relational positioning

Parent (Master) In-Line: If the parent device is moved, the cross reference information moves with the parent device only in the axis that is opposite to its displacement axis. As an example if the parent device is moved up a vertical wire, the cross reference information will stay below the cross reference marker line defined in the title border. If a vertical parent device is moved sideways the cross reference information will move sideways whilst still under the cross reference marker line (example shown below – the red line signifying an imaginary marker line)



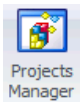
Selecting *Symbols Tab* allows the user to specify which symbol is used for the cross referencing for a specific function.

As an example the symbol associated with showing a *NO Contact* is TR-EL057. If we browse further down the list there is no symbol association with the *NC Power Contact*. From the following set of icons  we can *assign*, *delete* and *edit* a symbol association.

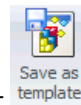


Remember the changes are made in the <<YOUR COMPANY NAME>> TEMPLATE project and this means that they will be reflected in all new projects

Right click on the project > Close Project



Select *Projects Manager*



Highlight the project in the list and then select *Save as Template*

The project template can be saved as <<YOUR COMPANY NAME>> TEMPLATE.

