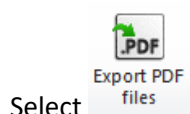


elecworks™ Tips & Tricks

Navigateable PDF Documents

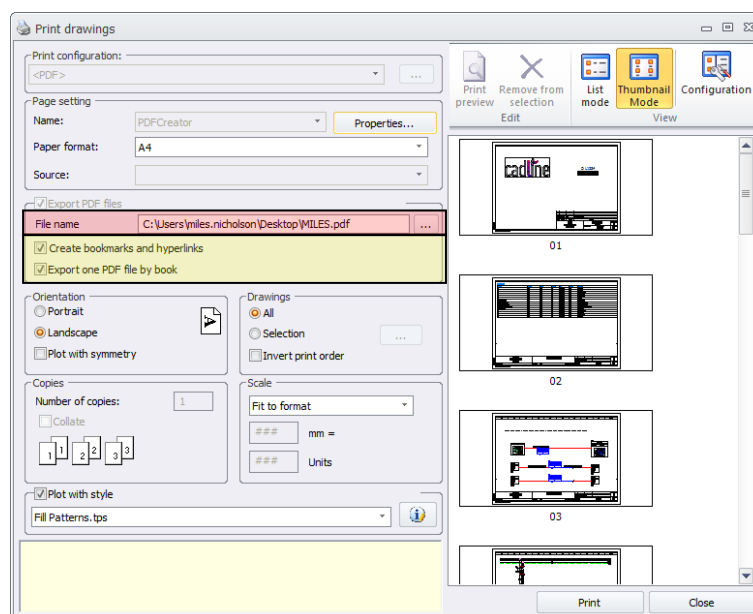
In this Tips and Tricks we look at how to create a PDF document for the project where you or your client can navigate around the project as if the circuit was virtual.

Select the *Import/Export* ribbon tab



Select

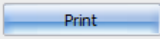
The following dialogue is shown




Export Components tree This option creates a components tree list in the PDF document that the user or client can search on a specific component mark

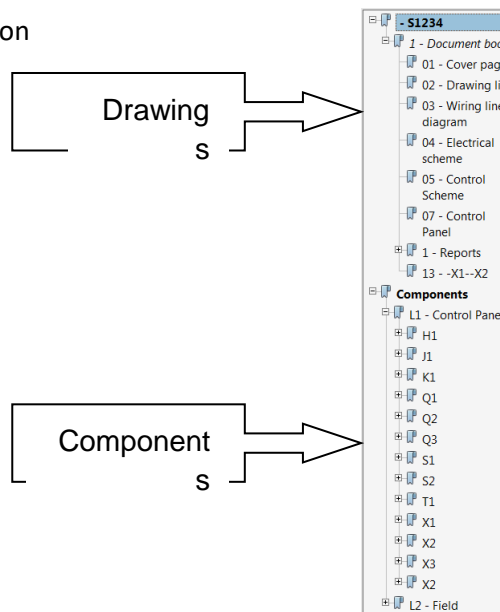
Export one PDF file by book This option creates one multi-page PDF document for the entire document book

Define the PDF name and print location **highlighted in red**

Select 

To view the component tree in the PDF, select 

Both drawings and components can be navigated on



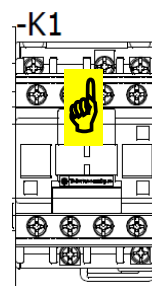
Click on the [+] symbol to expand the selection

If a component has more than one navigatable link e.g. schematic, panel etc these will be listed

Click the appropriate link to go to the component

Hover over a component and a hand symbol will appear

Click the link and you will navigate to the next insertion of the component e.g. contact, coil, footprint, single line etc



The cycling through the associated components is done in the order drawn in the document book PDF