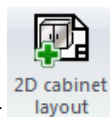


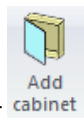
elecworks™ Tips & Tricks

Changing the Generic 2D Footprint Assigned to a Cabinet

In the Manufacturer Parts Manager, you have the ability to specify a 2D model associated with a specific part. If the part doesn't have a 2D symbol associated, elecworks™ will use a generic footprint and scale the generic footprint to the height, width and depth dimensions defined in the part information.



As an example of the above, create a *2D Cabinet layout* for your current active project



Go into the drawing and select *Add Cabinet*

Choose a *Manufacturer* of Rittal and a *Reference* of 1057500

Select and place in your drawing. The cabinet footprint is basic and you may wish to have a more detailed drawing and one where the back plate is separated.

To see why it used the specific footprint, select the *Library* tab
Select *Manufacturer parts manager*

Select the *Classification* of Boxes, cabinets

Select the  *Filters* tab

Choose a *Manufacturer* of Rittal and a *Reference* of 1057500



Highlight the part from the list and select *Properties*

- Illustration	
Line diagram symbol :	
Scheme symbol :	
3D part :	
2D footprint :	
Connection label :	
- Size	
Width (mm) :	500
Height (mm) :	500
Depth (mm) :	210



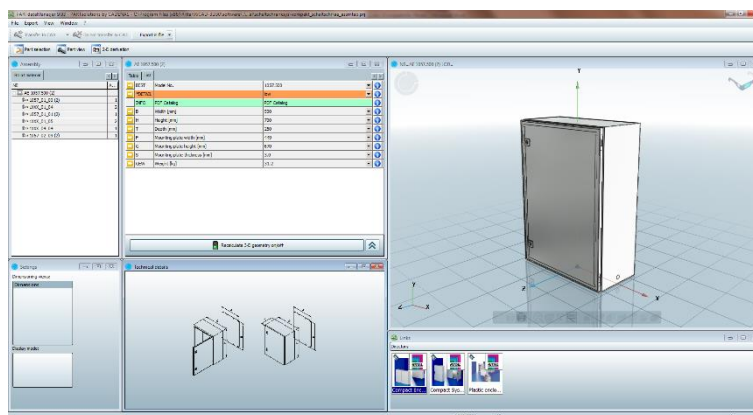
Note the 2D footprint field is blank so this 2D footprint is being created from a generic footprint and resized based on the dimensions stipulated.

The generic footprint is defined in *Library tab > Component Classifications*

Ideally we should define a better definition 2D footprint in the properties of the part.

Most cabinet manufacturers have their drawings available in either DXF or DWG format which means they can be used within elecworks™

Rittal have [RiCAD 3D](#) available allowing the user to use either 2D or 3D models in a variety of CAD formats



In the Rittal RiCAD software, select  > *AutoCAD 2D DWG*

Choose your view type and the output directory

You can import the DWG into elecworks™

Select *Library tab > 2D Footprints manager*

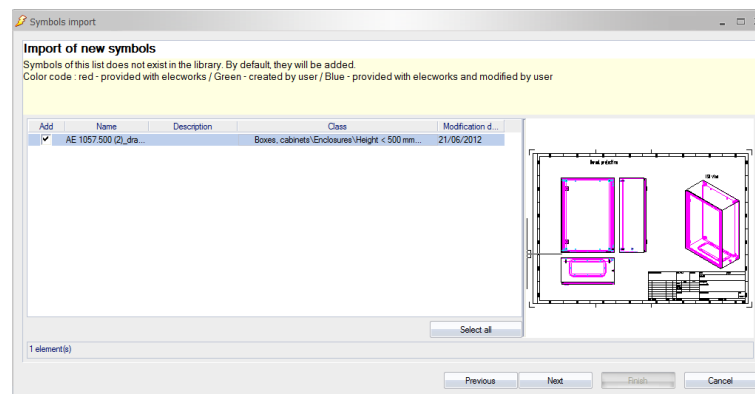


Select *Classifications tab > Boxes, cabinets > Enclosures > <500mm*

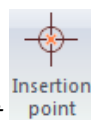
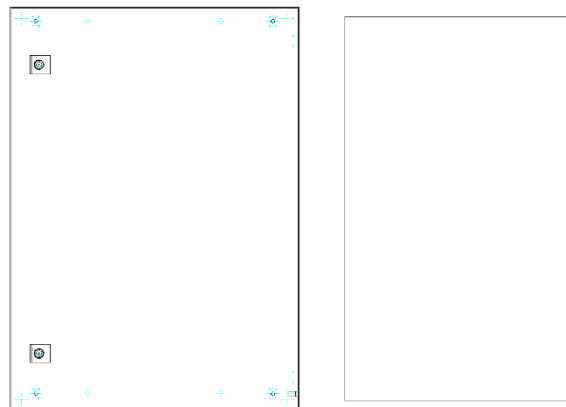
Select *DWG Import*



Add the file into the 2D footprints ensuring the classification is as above



Open the footprint up and remove any detail you don't wish to have such as title frame or a specific view. In addition you may wish to separate the back plate away from the cabinet



Ensure you change the *Insertion point* to the insertion base point

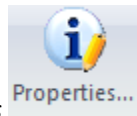
Close the symbol

Select *Manufacturer parts manager*

Select the *Classification* of Boxes, cabinets

Select the  **Filters** tab

Choose a *Manufacturer* of Rittal and a *Reference* of 1057500



Highlight the part from the list and select *Properties*

- Illustration	
Line diagram symbol :	
Scheme symbol :	
3D part :	
2D footprint :	
Connection label :	
- Size	
Width (mm) :	500
Height (mm) :	500
Depth (mm) :	210

Change the 2D Footprint to the correct 2D Footprint drawing!

