

elecworks™ Tips & Tricks

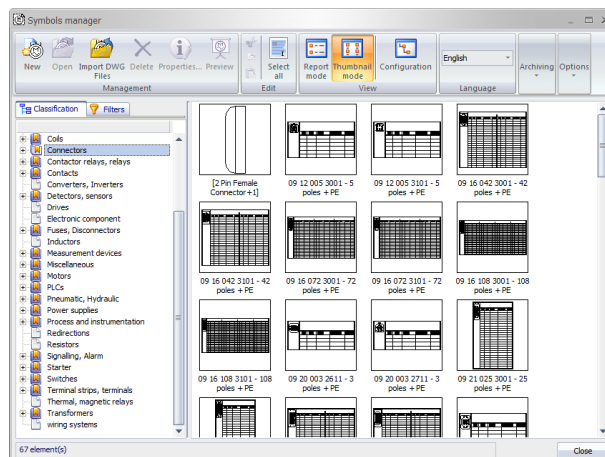
Creation of a Schematic Symbol



Symbols Manager

From the *Library* ribbon tab, select the command *Symbols Manager*

The following dialogue will appear:



Choose the classification (on the left) where you would like the symbol to be placed. The symbol can always be moved to a different location later.

In this example, we will create *a variable speed drive in the Drives* section

Select the *Drives* section.



DWG Import

If you have existing AutoCAD DWG symbols, you can import the DWG symbols via the options *DWG Import*. Single or multiple symbols can be imported with attributes defined in AutoCAD mapped to elecworks™ intelligence.

However in this example, we will create the symbol from scratch which is the worst case scenario.

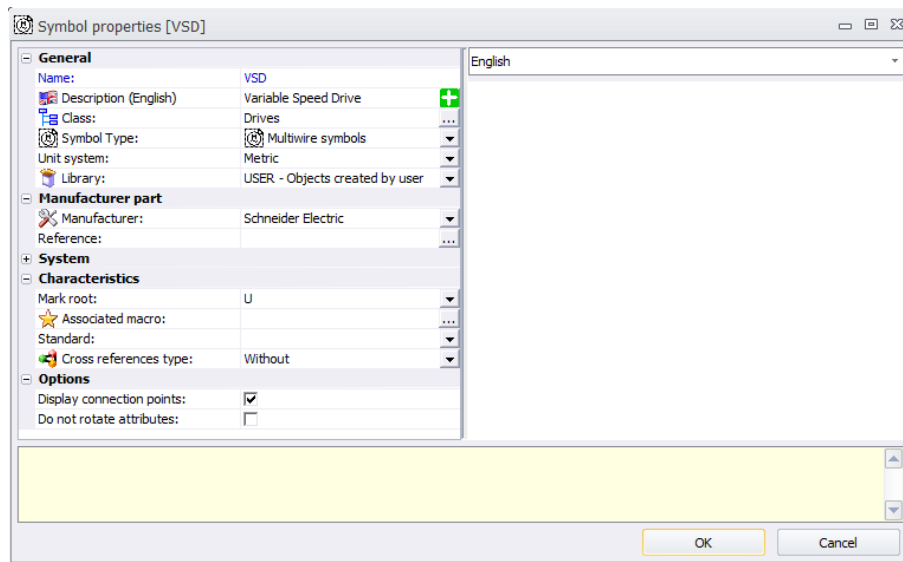


New

Select *New*

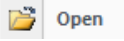


Fill in the record card as shown:



Select 

The new symbol will be shown in the symbols manager dialogue.

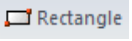
Right click on the symbol and select 

Select F7 to turn *Grid On*

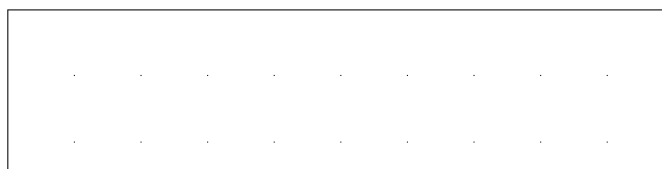
Right click on  to change the snap settings to 5mm

Select F9 to turn *Snap On*

Select *Drawing* tab

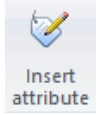
Select  to draw a rectangle

Draw a rectangle approximately 100mm wide x 25mm high



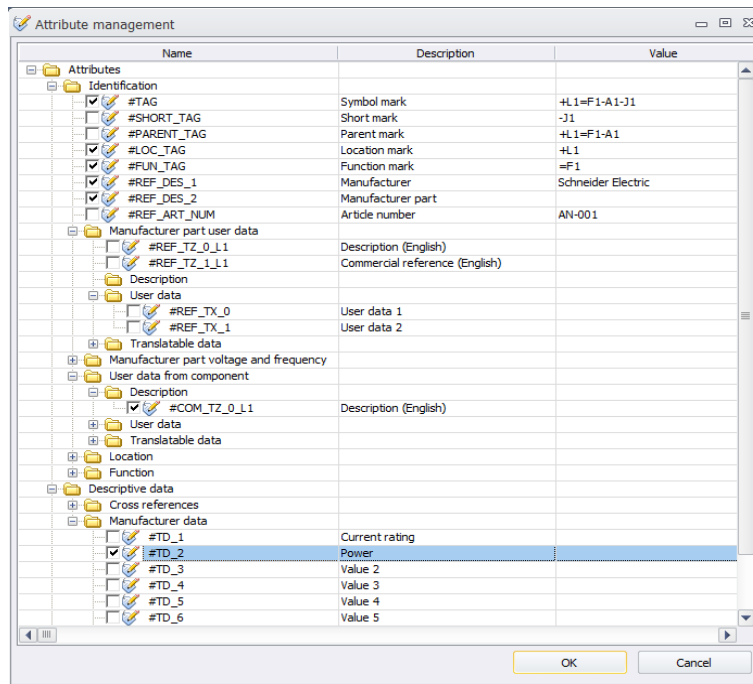
N.B. Additional graphics may be drawn if you wish the symbol to be more aesthetically pleasing

Select the *Edit Symbol* ribbon tab



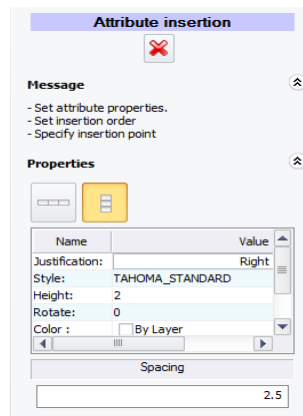
Select **Insert attribute** *Insert attribute*

Select the attributes as shown (ignore the values)



Select **OK**

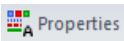
Ensure the text size, spacing and justification is as shown



The attributes will appear on your cursor. Position the attributes in the symbols as shown.

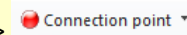


Attributes can be moved around by selecting the ■ blue square (grip) associated with the text

Text justification can be changed by using the command  Properties

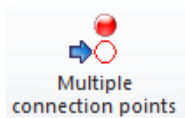


New circuit



Multiple connection points

Connection points can be defined either one at a time **Connection point** or multiple **Multiple connection points**
 A circuit is a circuit type that can have multiple connections associated with it. Multiple different types of circuits can be defined within a component



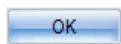
Select **Multiple Connection Points**



Select

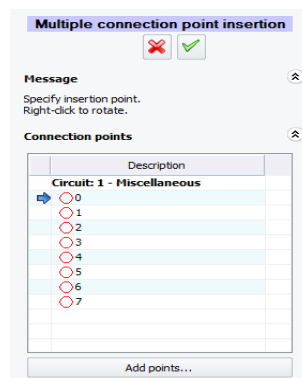
Define the following

| Circuit type | Number of circuits | Number of terminals p... | Information... |
|---------------|--------------------|--------------------------|----------------|
| Miscellaneous | 1 | 8 | Disconnec... |



Select **OK**

You are then prompted for each insertion of each connection point



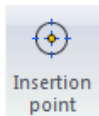
A connection point will appear on the end of your cursor



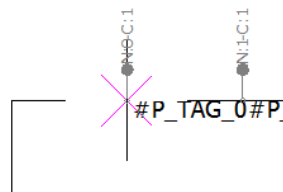
Right click on your mouse and the connection point will orientate to the different quadrants

A top connection should have the connection dot above
A bottom connection should have the connection dot below

In this example, place the first 4 connection points at the top of the rectangle spaced 10mm apart and the remaining four at the bottom as shown



Select **Insertion point** and select the upper left connection point as the insertion point



Select **File >**

Close the symbol **X**

Select **Yes** to save the changes (if prompted)



The symbol will now appear in the **Symbols Manager** for selection

