

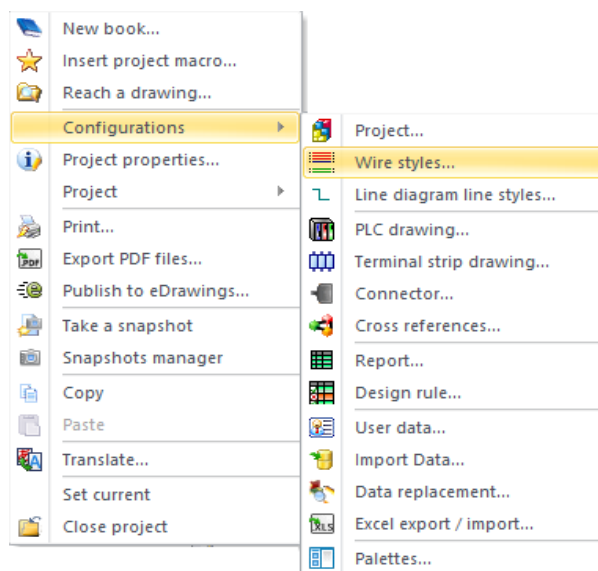
elecworks™ Tips & Tricks

Setting Company's Standards

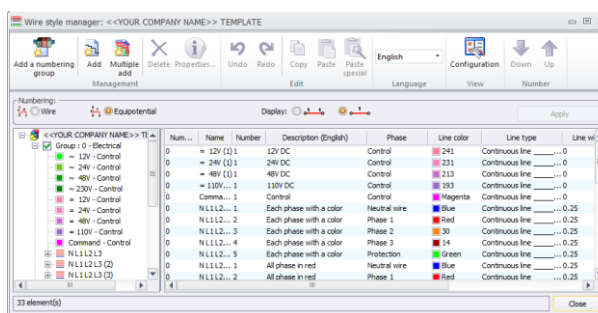
This is paramount in being able to use elecworks™ and in creating a <<YOUR COMPANY NAME>> **TEMPLATE** project similar to the IEC template project

When you create a new project you are able to create a new project from either IEC or ANSI template project settings. However, you may wish to change the settings of this template project e.g. wire styles

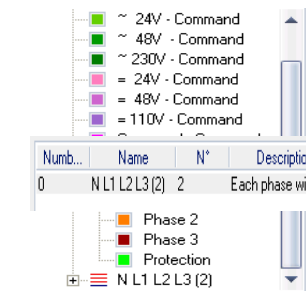
Right click on the project > *Configurations* > *Wire Styles*



In this example we are going to change the wire colours to be the IEC phase colours, define a numbering system for our protective earth wires and create a new 110VAC wire.



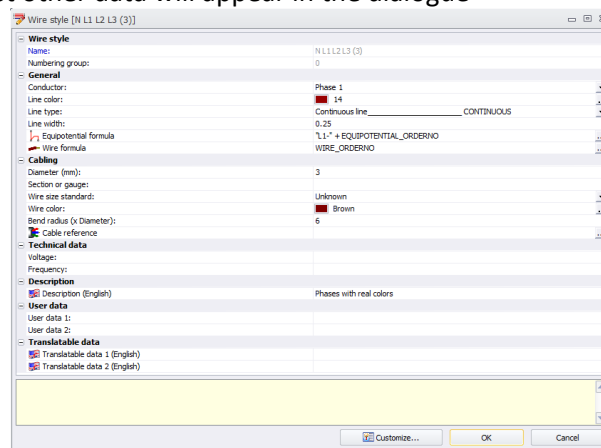
Select the wire type you wish to change from the list on the left of the dialogue.



Once highlighted, the colour will be displayed to the right of the dialogue. Double left click on the colour.

Num...	Name	N*	Description (English)	Phase	Color	Line type
0	N L1 L2 L3 (2)	2	Each phase with a color	Phase 1	Red	Continuous line ... "L1"

The colour amongst other data will appear in the dialogue





Change the following:

- Line Colour: 14
- Diameter: 3.7
- Section or gauge: 2.5
- Wire Size Standard: Section (mm2)
- Wire Colour: Brown
- Voltage: 400VAC
- Frequency: 50Hz

Repeat for Phase 2

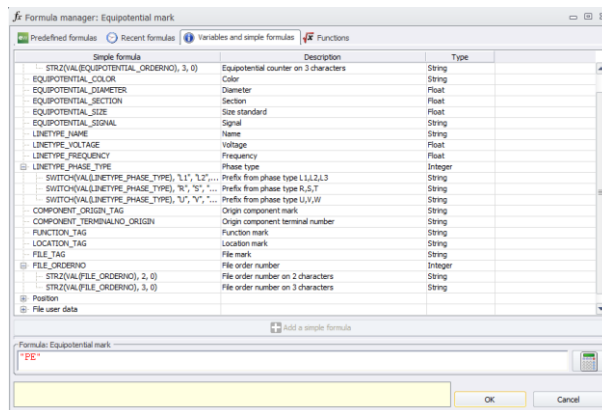
- Line Colour: 250
- Diameter: 3.7
- Section or gauge: 2.5
- Wire Size Standard: Section (mm2)
- Wire Colour: Black
- Voltage: 400VAC
- Frequency: 50Hz

Repeat for Phase 3

Line Colour:  Gray
 Diameter: 3.7
 Section or gauge: 2.5
 Wire Size Standard: Section (mm2)
 Wire Colour:  Grey
 Voltage: 400VAC
 Frequency: 50Hz

Repeat for any other wire changes you wish to make

For the protective earth wire, click on the numbering formula and the following dialogue will be displayed



Select PE from the Predefined formula list

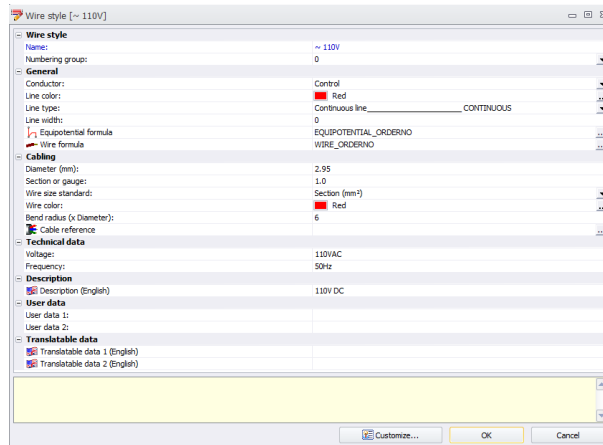
Select  Replace formula



Select 

Select 

Select 

Now create a new wire style for 110VAC with the following defined:



Line Colour:  Red
 Diameter: 2.95
 Section or gauge: 1.0
 Wire Size Standard: Section (mm²)
 Wire Colour:  Red
 Voltage: 110VAC
 Frequency: 50Hz
 Description (English): 110V AC