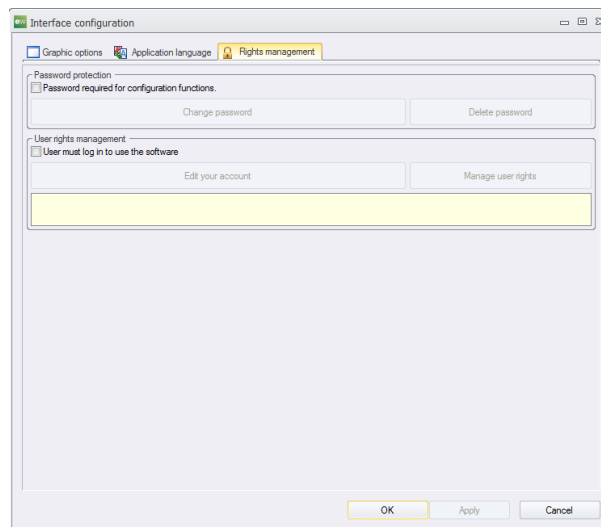


elecworks™ Tips & Tricks

User Rights Management

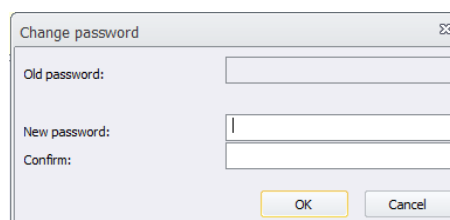
elecworks™ offers two modes of User Rights management. The first mode consists of locking configuration access and the second mode consists of using profiles with associated rights. These two features cannot be cumulated.



Password protection

This option is used to restrict user rights to define configuration parameters of the application and of projects by means of a password.

Select **Password required for configuration functions.** if you want to activate the protected access feature for configurations (Application settings and project configurations). The following dialogue appears to enter a new password:



To apply the changes, elecworks must be restarted.

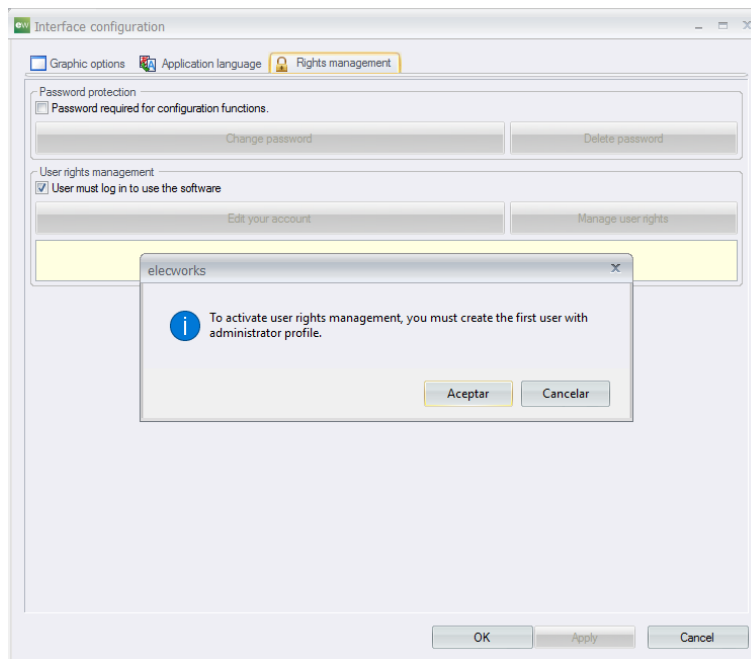
User rights management

This command allows you to manage user rights on certain features. A User belongs to a Group and a Group is associated with a Profile in which the rights are managed. A password is required to use the software.

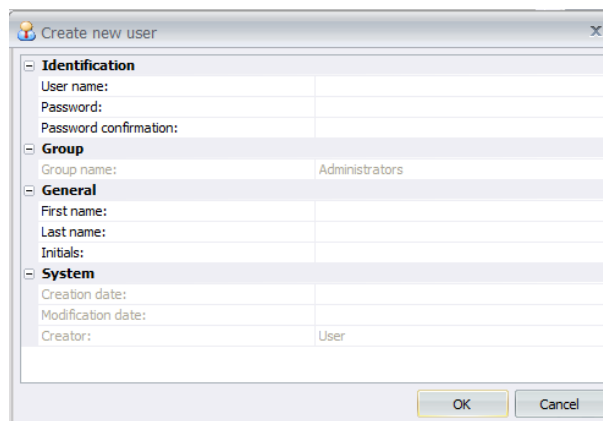
User must log in to use the software:

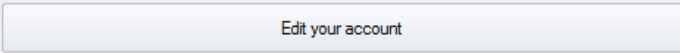
From the Tools ribbon tab > Interface Configuration > select User must log in to use the software

The first time, a dialogue box will appear to create the first User (Administrator), otherwise an Administrator password is required.




Select Accept





: Allows you to manage the user accounts. A password is required to access the User properties dialogue box.



: Opens the User rights manager dialogue box to manage Users and Groups.

There are five different user profiles and their access rights are as follows:

Feature pack	Description	Administrator	Library manager	Project manager	Project editor	Project contributor
General	Archiving the complete environme...	X	X	X		
	Unarchiving environment: projects,...	X	X	X		
	Unarchive	X	X	X		
	Formula manager	X	X	X		
	User data configuration	X	X	X		
Tools	User rights management	X				
	Change application settings	X				
	Define location and list of files to in...	X				
	Send / Receive messages from all c...	X	X	X	X	X
	Change and define line types	X	X	X		
	Displays dimension styles manager	X	X	X		
Library	Display symbols manager	X	X			
	Display the 2D cabinet layout footp...	X	X			
	Display the title blocks manager	X	X			
	Display the macros manager	X	X			
	Display the cable references manag...	X	X			
	Display the manufacturer parts ma...	X	X			
	Add new super part to manufactur...	X	X			
	Download CAD files	X	X			
	Define libraries to group symbols, ...	X	X			
	Customize the data associated with...	X	X			
	Set connection to an external datab...	X	X			
	Open with DraftSight	X	X	X		
	Update library when you unarchive...	X	X			
Project management	Create a new project	X	X	X		
	Edit project properties	X	X	X	X	
	Duplicate project	X	X	X	X	
	Save the selected project as a temp...	X	X	X		
	Project : Delete	X	X	X		
	Edit date	X	X	X		
	SOLIDWORKS PDM Professional ch...	X	X	X		
	SOLIDWORKS PDM Professional ch...	X	X	X		
	Update files for PDM	X	X	X		
Project data	Display PLCs manager	X	X	X		
	Display Inputs / Outputs manager	X	X	X		
	Show harnesses manager	X	X	X		
	Reports manager	X	X	X	X	X
	Design rules manager	X	X	X	X	X

Process	Automatically insert origin - destin...	X	X	X	X	
	Optimize wire cabling order from p...	X	X	X	X	
	Update data from the project	X	X	X		
	Replace project data	X	X	X		
	Calculate new wire marks	X	X	X	X	
	Recalculate wire numbers	X	X	X	X	
	Recalculate the project marks	X	X	X	X	
	Generate 2D cabinet layout files for...	X	X	X	X	
	Translate all texts of current project	X	X	X	X	
	Manage snapshots of the active pr...	X	X	X		
	Restore snapshot as a new project	X	X	X		
	Revert current project to snapshot	X	X	X		
	Take a snapshot of the active project	X	X	X		
	Propagate data between connecte...	X	X	X	X	
Import / Export	Import DWG/DXF files in the project	X	X	X		
	Import data in project	X	X	X		
	Import data in libraries	X	X			
	Import from Excel	X	X	X		
	Export to Excel	X	X	X		
	Export project drawings to PDF files	X	X	X	X	X
	Export project drawings to DWG for...	X	X	X	X	X
	Publish project drawings to SOLID...	X	X	X	X	X
Generate drawing automatically fro...	X	X	X			
Project configuration	Display current project configuration	X	X	X		
	Wire style	X	X	X		
	Line diagram line style manager	X	X	X		
	Pipe / tube style	X	X	X		
	PLC drawing configuration manager	X	X	X		
	Connector configuration manager	X	X	X		
	Terminal strip configuration mana...	X	X	X		
	Cross references configuration	X	X	X		
	Report configurations manager	X	X	X		
	Design rule configurations manager	X	X	X		
	User data configuration manager	X	X	X		
	Import data configuration manager	X	X	X		
	Excel export / import templates ma...	X	X	X		
	Data replacement configurations ...	X	X	X		
	Palettes configurations	X	X	X		
	Formulas configuration manager	X	X	X		
Edit report filter	X	X	X			



Document browser	New book	X	X	X			
	Book : Revision	X	X	X			
	Drawing : Revision	X	X	X	X		
	Book : Configure access rights	X	X	X			
	Folder creation	X	X	X	X		
	Drawing : New	X	X	X	X		
	Mixed scheme : New	X	X	X	X		
	Renumber drawings	X	X	X	X		
	Title blocks : Open	X	X				
	Title blocks : Add to library	X	X				
	Paste as new document	X	X	X	X		
	Change location	X	X	X	X		
	Change function	X	X	X	X		
	Drawing : Delete	X	X	X	X		
	Insert project macro	X	X	X	X		
	Create project macro	X	X				
	Open with DraftSight	X	X	X	X	X	
	Component browser	Add a new location	X	X	X	X	
		Add a new function	X	X	X	X	
Add new PLC		X	X	X	X		
Add a new connector		X	X	X	X		
Add new manufacturer part		X	X	X	X		
Location : Delete		X	X	X	X		
Function : Delete		X	X	X	X		
Set as non-permanent component		X	X	X	X		
Set as permanent component		X	X	X	X		
Assign manufacturer parts		X	X	X	X		
Assign super part to project data		X	X	X	X	X	
Manufacturer part properties		X	X				
Add manually a manufacturer part		X	X				
Insert symbol from manufacturer p...		X	X	X	X	X	
Command	Dynamic PLC insertion	X	X	X	X	X	
	Insert a connection label	X	X	X	X	X	
	Connector dynamic insertion	X	X	X	X	X	
	Insert cable label	X	X	X	X	X	
	Insert symbol for printed circuit bo...	X	X	X	X	X	
	Automatically show nodal indicator	X	X	X	X	X	
	Edit connection path	X	X	X	X	X	
	Update reports, design rules and te...	X	X	X			
Go to objects from reports and desi...	X	X	X	X	X		



Symbol in drawing	Symbol : Open	X	X			
	Symbol : Add to library	X	X			
	Go to in other book	X	X	X		
Wire in drawing	Wire style properties	X	X	X		
	Wire properties	X	X	X	X	
Palette	Add palette group	X	X			
	Delete palette group	X	X			
	Rename palette group	X	X			
	Edit palette group	X	X			
	Edit this macro	X	X			
SOLIDWORKS command	Generate SOLIDWORKS 3D assembl...	X	X	X	X	
	Electrical component wizard	X	X	X		
	Create 2D drawing from SOLIDWO...	X	X	X		
	Calculation of cable duct filling ratio	X	X	X		
	Create project drawing from SOLID...	X	X	X	X	

