

Having issues with Dell gaming Killer E2200 network card – blocking certain ports

Here is a small guide on how to get Windows to see your Killer E2200 NIC as a Qualcomm Atheros AR8161 PCI-E Gigabit Ethernet Controller.

The Killer E2200 NIC is actually more or less a Qualcomm Atheros AR8161 chip.

1. Download the Driver for the Qualcomm Atheros AR8161 on qca.qualcomm.com.

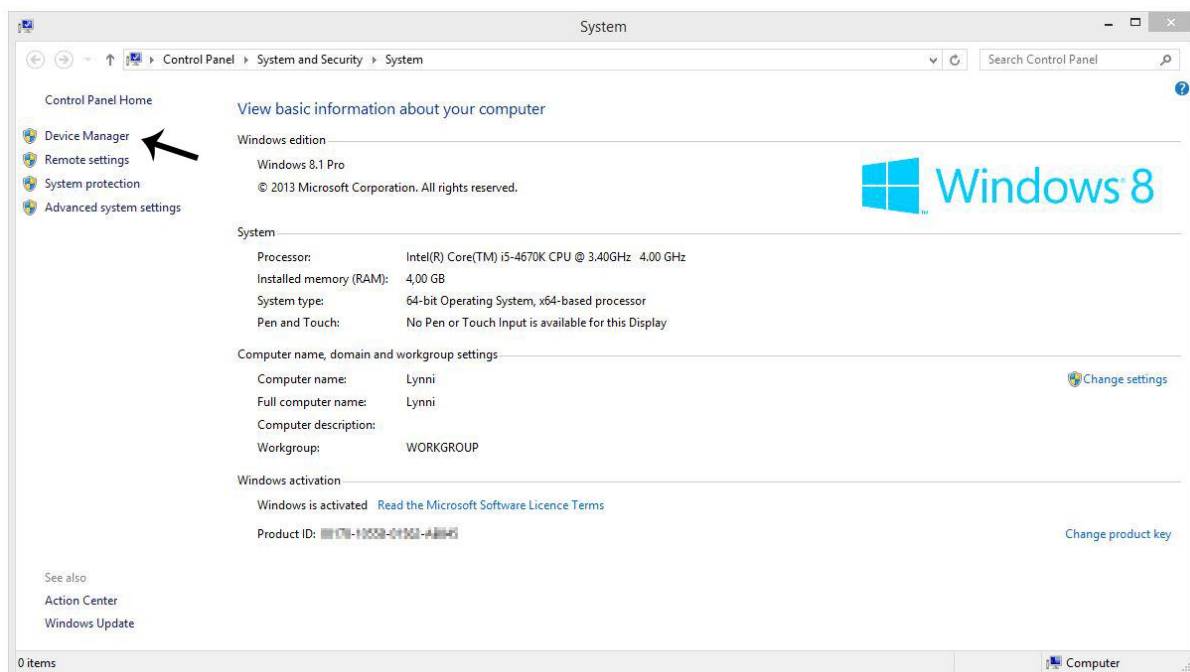
In the Download Sector this driver is called "WIN_AR816X_Windows WHQL Driver V2.1.0.21" under AR816X QCA817X Family Drivers.

DDL: AR813x_AR815x_AR816x_v2.1.0.21_WHQL.zip

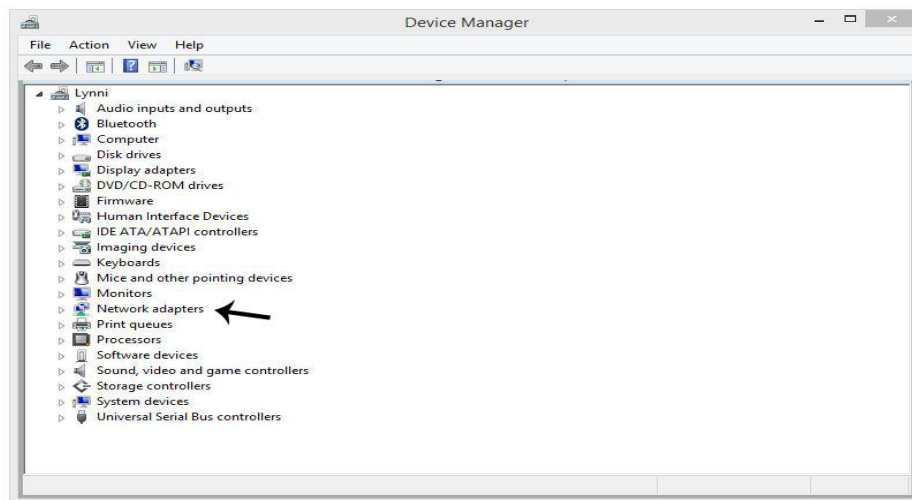
Source Link: <http://www.qca.qualcomm.com/resources/driverdownloads/>

2. After downloading the zip file, unpack it somewhere.

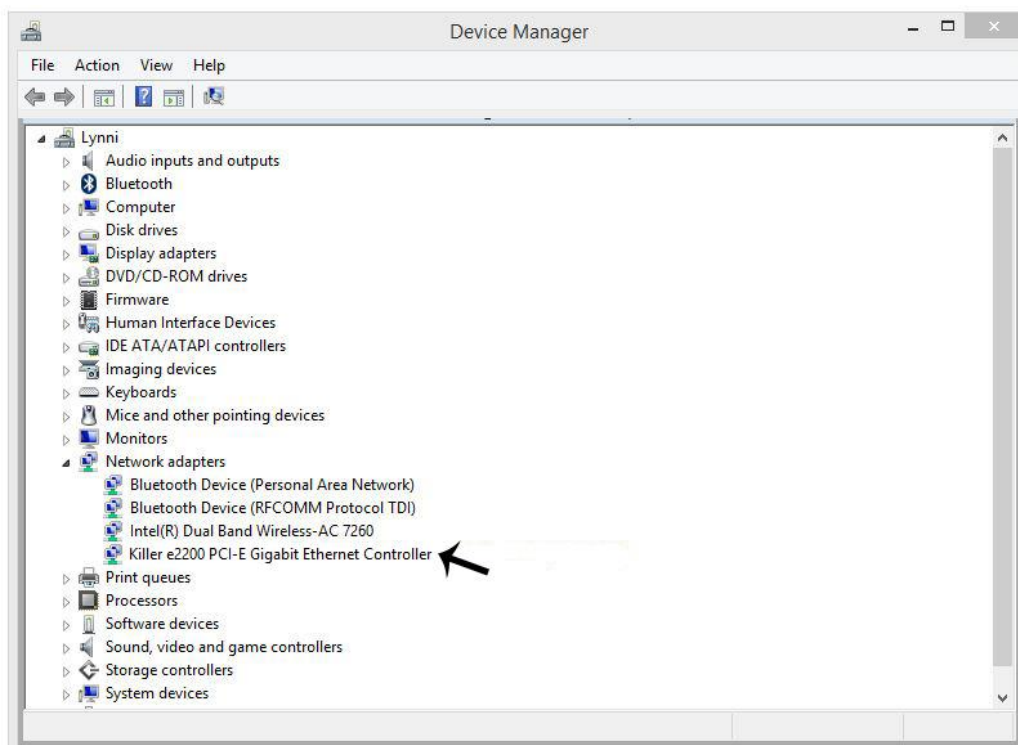
3. Go into Device Manager. (Right click on Computer-->Properties then on the left side under "Control Panel Home" you see "Device Manager").



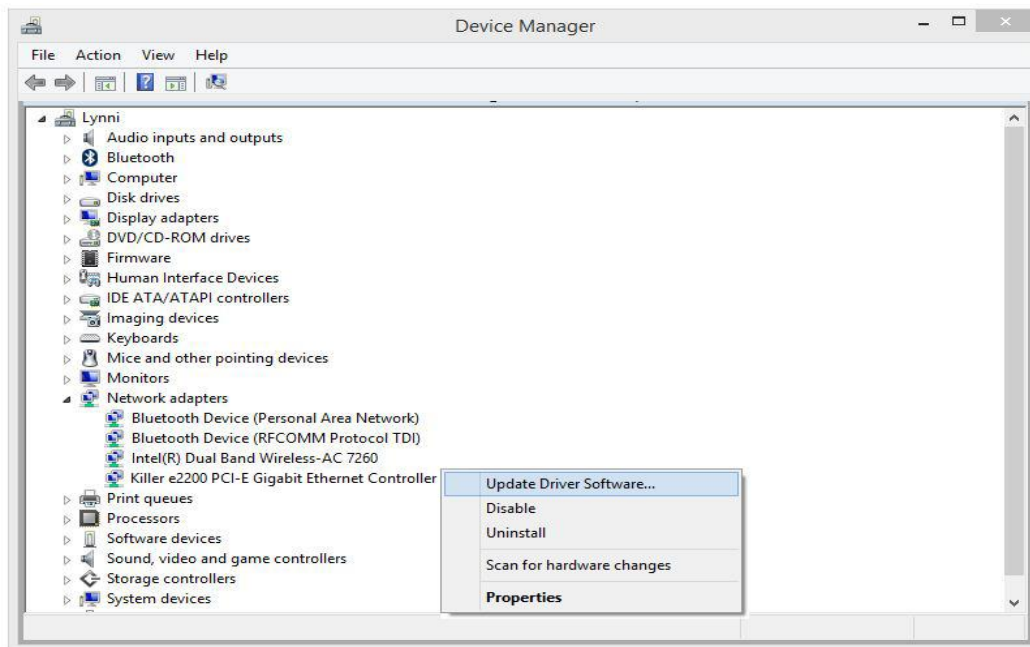
4. When "Device Manager" opens locale and expand "Network Adapters", you do that by clicking on the arrow head or double click on it.



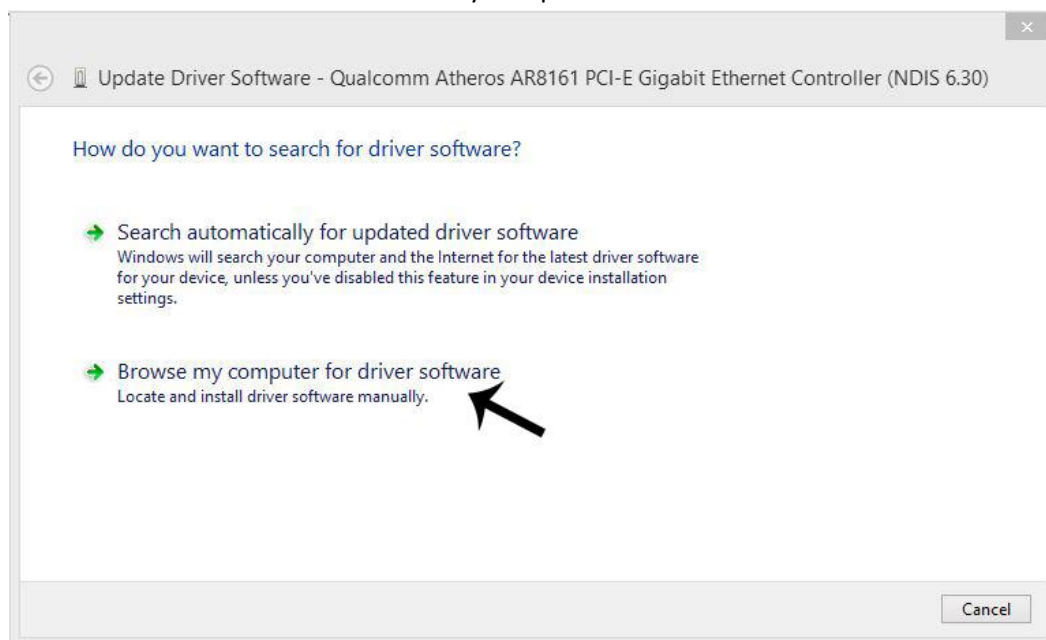
5. When "Network Adapters" is expanded you should see your Killer E2200 NIC.



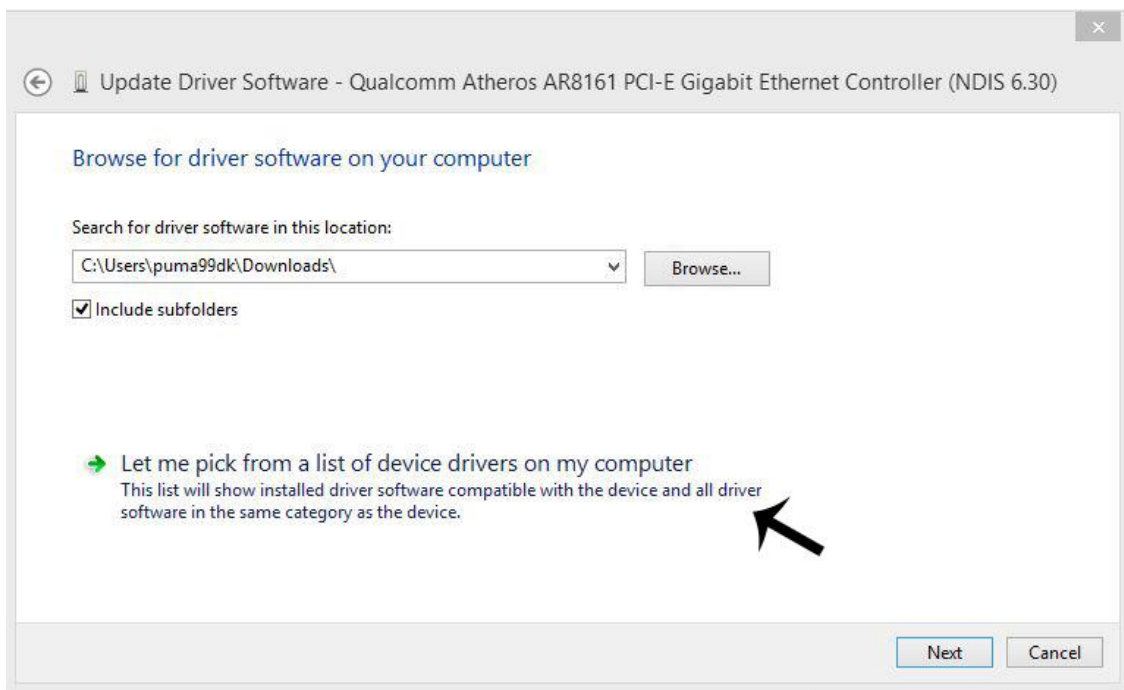
6. Right click on the "Killer E2200 NIC" and choose "Update Driver Software..."



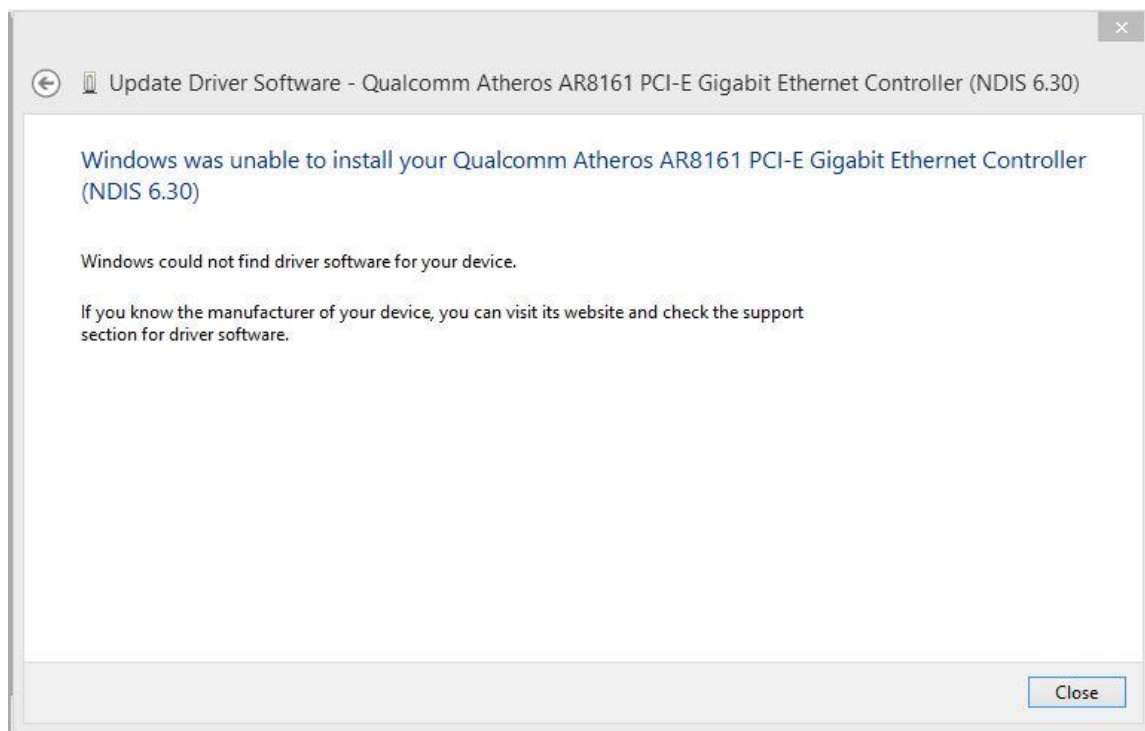
7. Choose "Browse my computer for driver software".



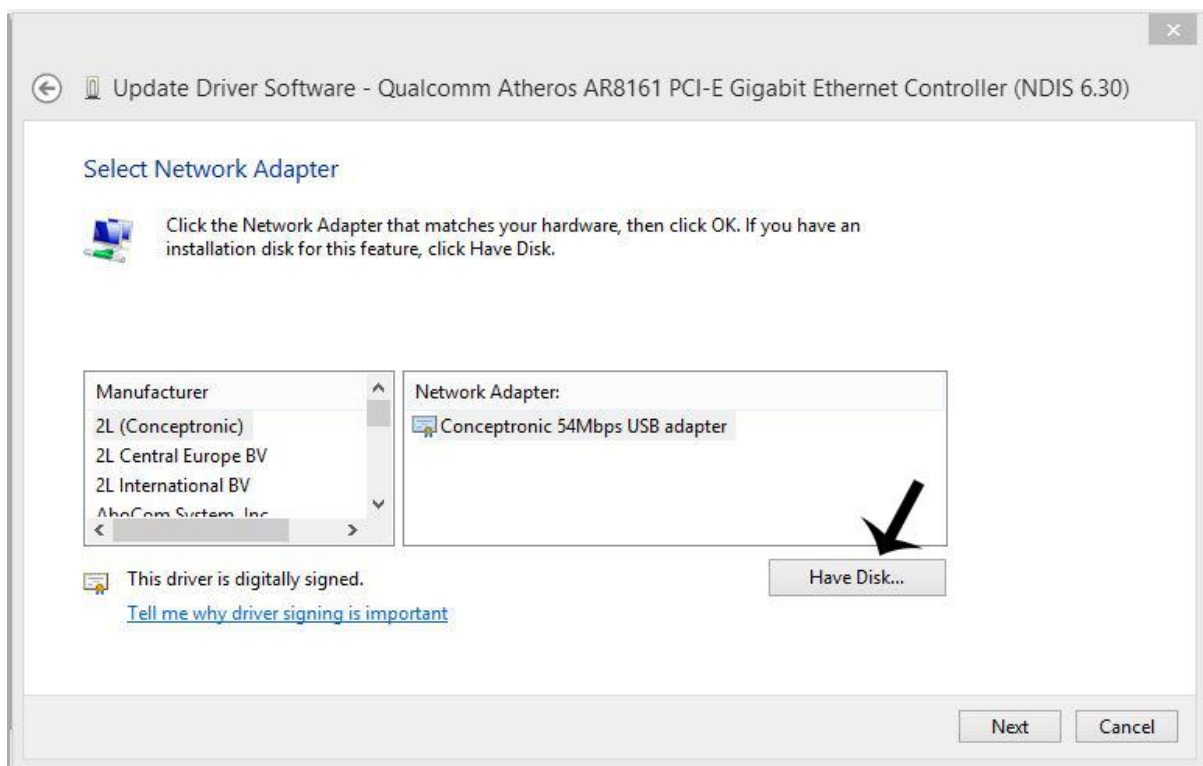
8. Now choose "Let me pick from a list of device drivers on my computer."



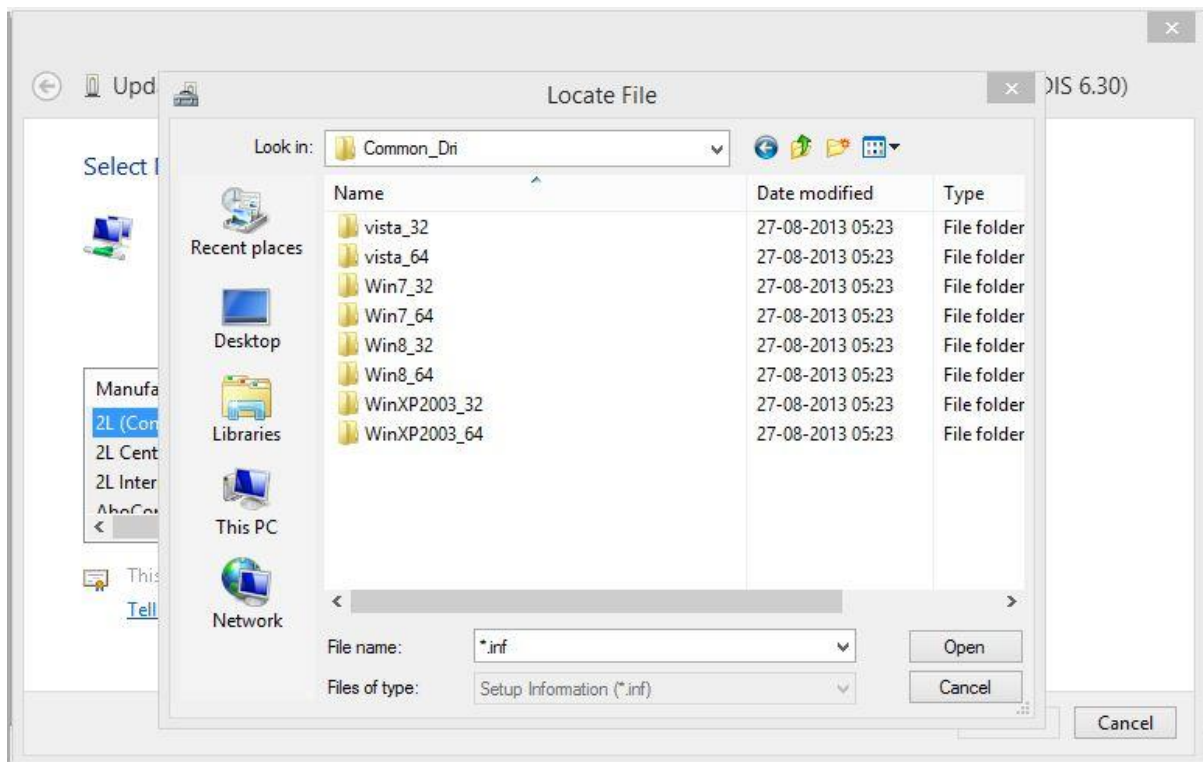
If you just do it as you normally would with "Search for a driver software in this location:" you will get that "Windows was unable to install the driver" (And no this isn't because I already have the driver installed it's because Windows see's the card as a Killer E2200 NIC):



9. Click on the "Have Disk..." button:

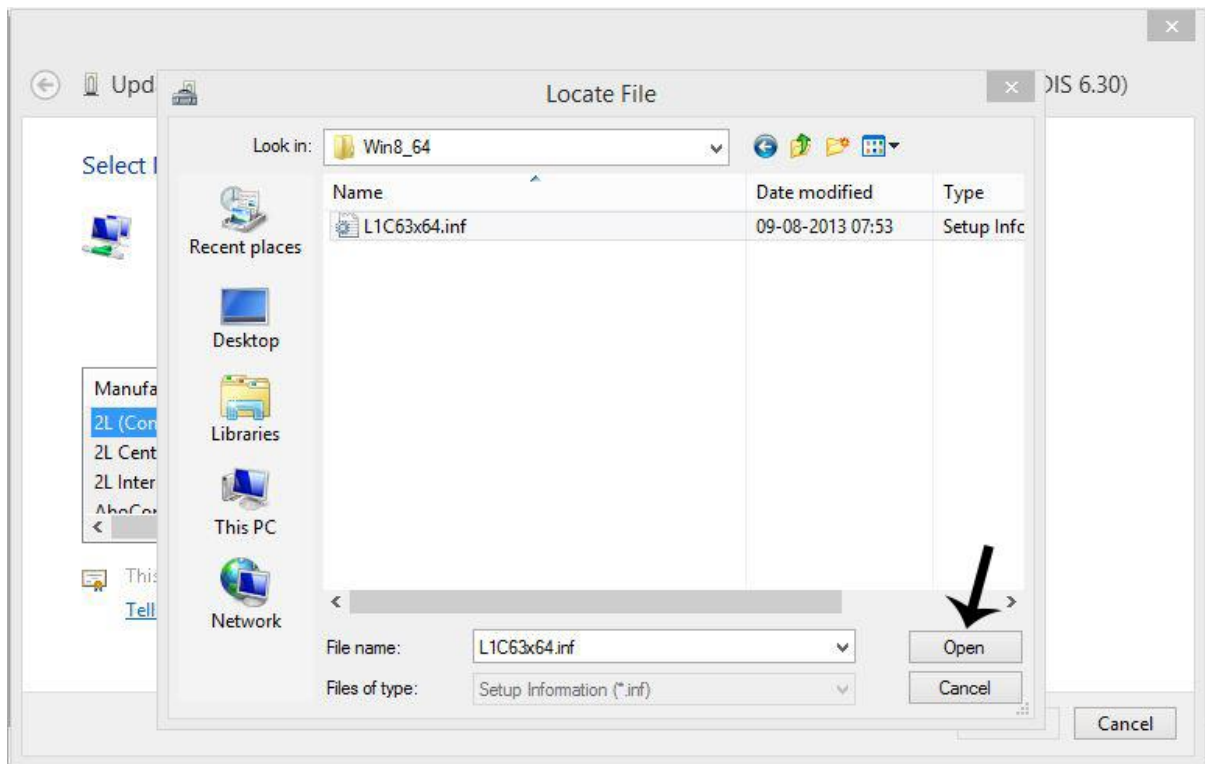


and then hit the "Browse" button, and go into where you have unpacked the driver, then find the folder called "Common_Dri" as u can see in the picture below...

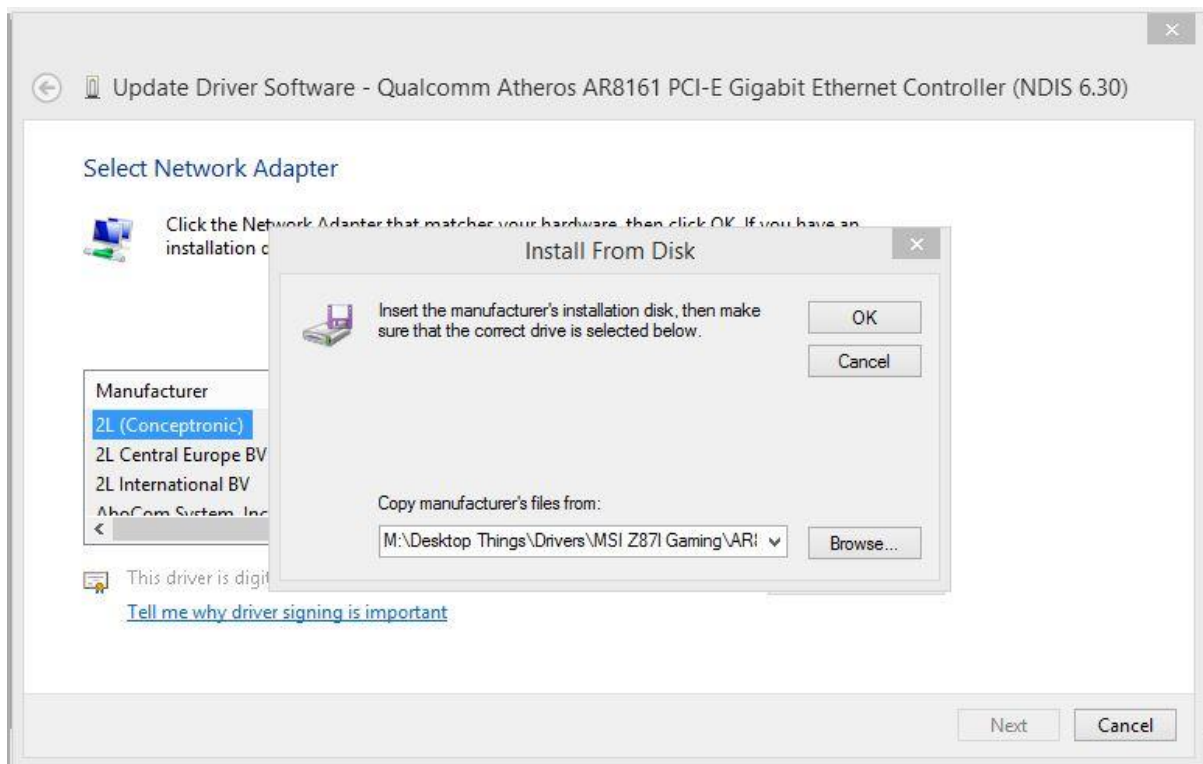


Choose the folder that matches your OS like for Windows 7 32bit u take "Win7_32", for Windows 7 64bit u take "Win7_64", for Windows 8/8.1 32bit u take "Win8_32", for Windows 8/8.1 64bit u take "Win8_64".

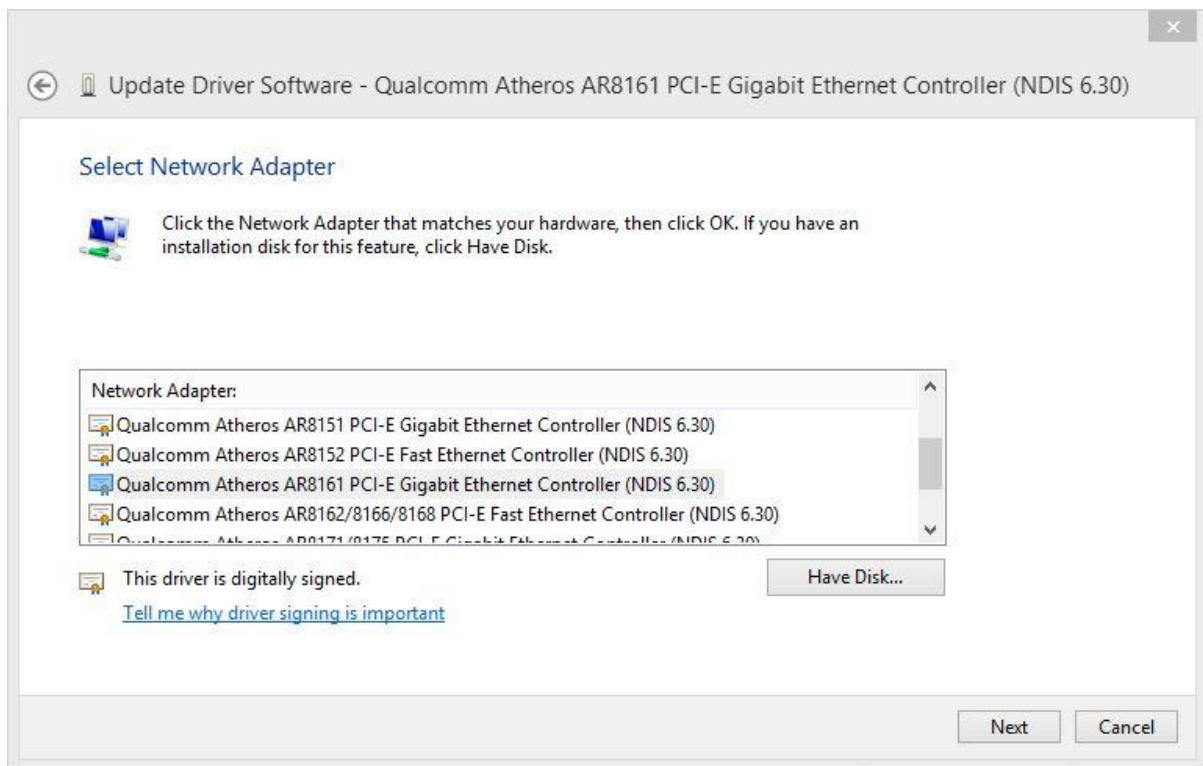
11. When u find the correct inf file, you either double click on it or mark it and hit "Open":



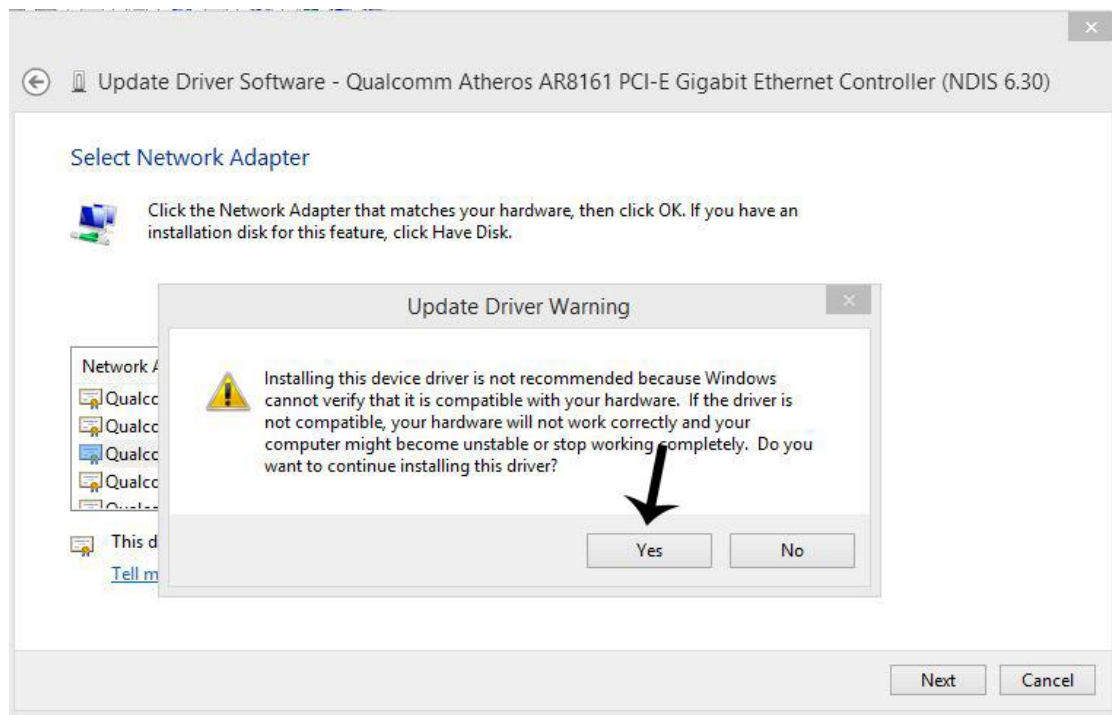
Then you click "OK" here.



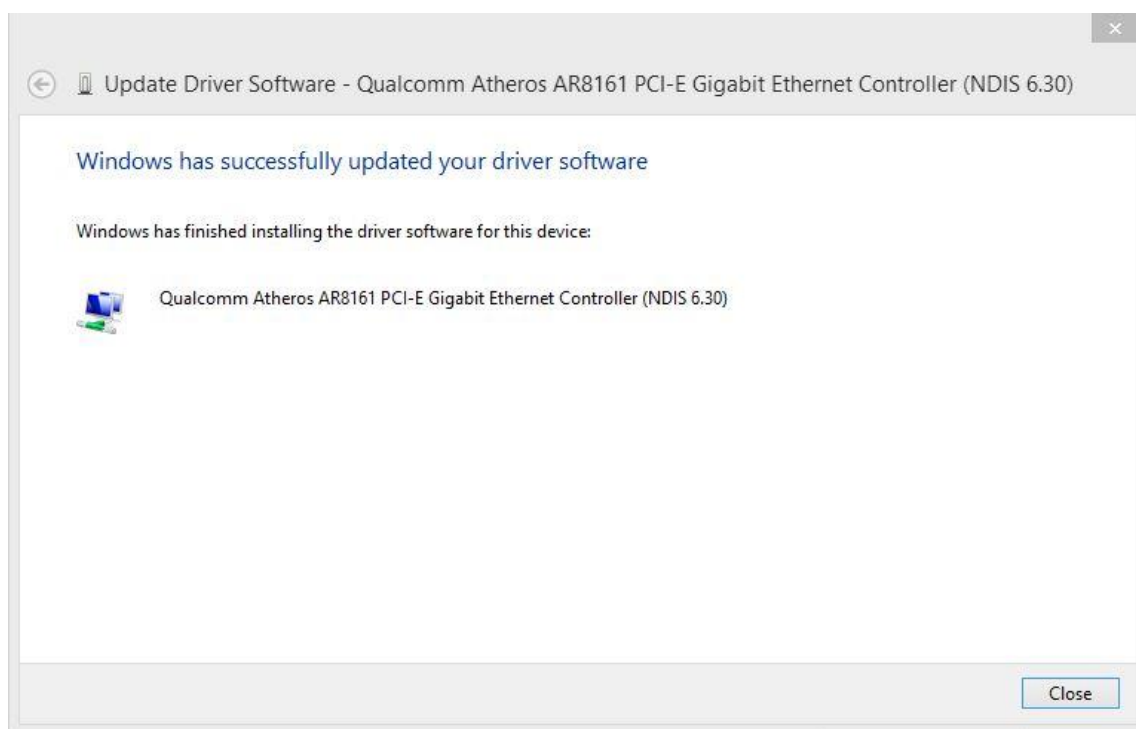
12. Then you get this window with a selection of drivers since this is a multi driver you get more than one, but scroll down in the window until you find "Qualcomm Atheros AR8161 PCI-E Gigabit Ethernet Controller (NDIS 6.30)" mark it and hit "Next":



13. Then you will get the "Update Driver Warning".



14. Then let Windows install the driver and you will get the message "Windows has successfully updated your driver software":



Hit "Close" and you will see your "Killer E2200 NIC" is now called "Qualcomm Atheros AR8161 PCI-E Gigabit Ethernet Controller (NDIS 6.30)" as shown below:

