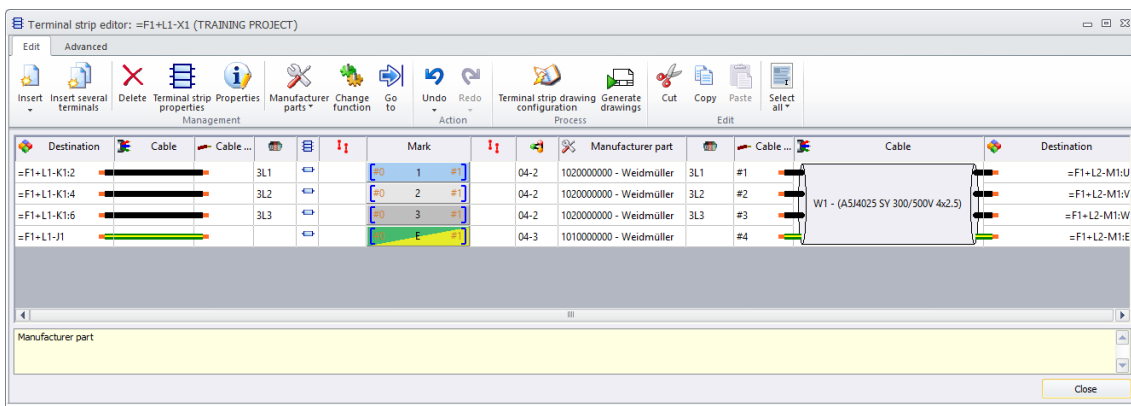



elecworks™ Tips & Tricks

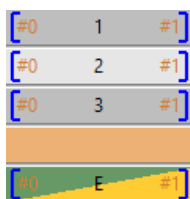
Adding Accessories In The Terminal Strip Editor

You can add accessories in the terminal editor such as end plates, partition plates, end stops and bridging bars or jumpers as well as adding spare terminals. These are displayed in the bill of materials and where appropriate within the terminal strip drawings. This tips & tricks shows you how to add accessories such as partition plates, end plates or end stops.

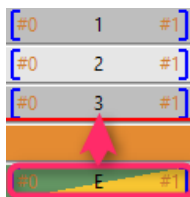


You can either highlight the terminal you wish to add an accessory to and *right click* >  Insert accessory

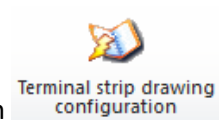
Or select  **Insert** >  >  Insert accessory



Terminals and their accessories can be moved around by dragging and dropping. They are shown in orange.

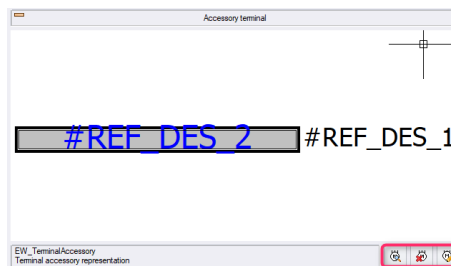


Mark			Manufacturer part
#0 1 #1		04-2	1020000000 - Weidmüller
#0 2 #1		04-2	1020000000 - Weidmüller
#0 3 #1		04-2	1020000000 - Weidmüller
#0 E #1		04-3	1010000000 - Weidmüller
		05	1060000000 - Weidmüller



The style of accessories shown in the terminal strip drawings is defined in

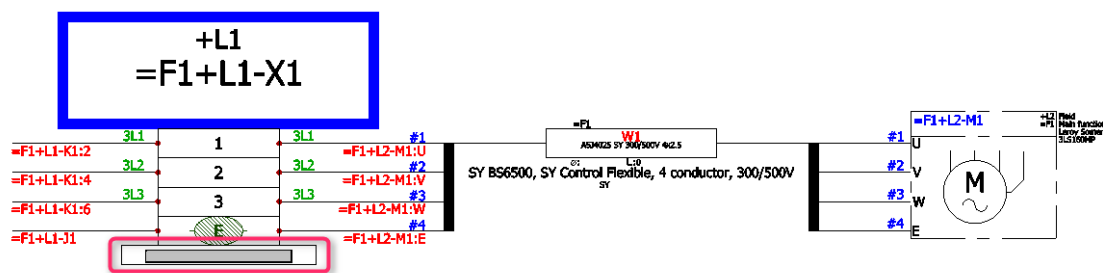
Select Symbols tab



You can change, delete or edit the symbol used



When the terminal strip drawings are created , accessories are shown as highlighted:



The accessory parts are listed in the bill of materials:

-X1-	1060000000	WAP WDU2.5N/4N - END PLATE FOR WDU 2.5 N, WEMID	Weidmüller
-X1-1	1020000000	WDU 2.5, FEED-THROUGH TERMINAL, DARK BEIGE	Weidmüller
-X1-2	1020000000	WDU 2.5, FEED-THROUGH TERMINAL, DARK BEIGE	Weidmüller
-X1-3	1020000000	WDU 2.5, FEED-THROUGH TERMINAL, DARK BEIGE	Weidmüller
-X1-E	1010000000	WPE 2.5, PE TERMINAL, GREEN/YELLOW	Weidmüller