

Inserting Parts Into The 3D Inventor Assembly Prior To The Schematic

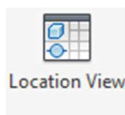
AutoCAD Electrical

Components can be inserted at any stage throughout a project whether in the single line diagram, cable block, topology, system architecture, schematic, 2D or 3D panel layout within AutoCAD Electrical or in this instance the 3D assembly within Inventor.



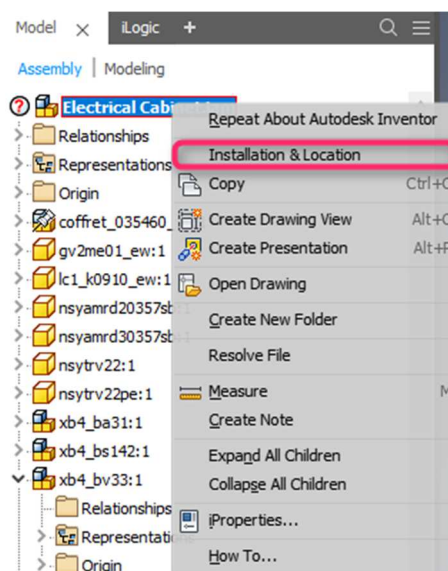
Select the *Electromechanical* ribbon. Select The Inventor assembly must be linked to the AutoCAD Electrical project

Once done, the AutoCAD Electrical components can be seen in Inventor and vice-versa after a save or a synchronise on the *Location View*.

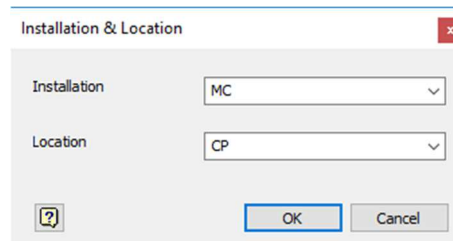


Select

Right click over the assembly in the assembly tree > Select Installation & Location



Define the default installation and location values for the assembly



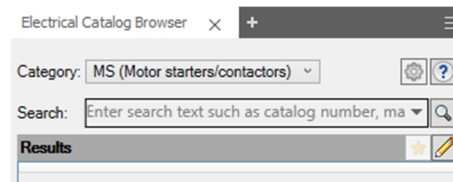
Select 

The above means the default installation & location for new electrical components are set

Select the *Assemble* ribbon tab





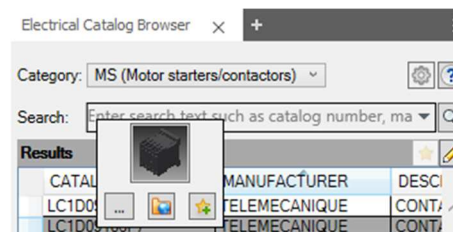
This turns on the *Electrical Catalog Browser* palette



Browse for the catalog reference:

Manufacturer: TELEMECANIQUE
Catalog: LC1D09106F7

Right click over the catalog reference and select the 3D part/assembly image e.g.  or if an IPT/IAM hasn't been associated (no image) 




Specify a location on the assembly

Parts such as door mount, back plate and DIN rail mounted components should ideally have their mating faces defined. Please refer to:

[Defining The Mating Surfaces For An Electrical Inventor 3D Part](#)


They should also have their electrical connections defined within the IPT/IAM. Please refer to:

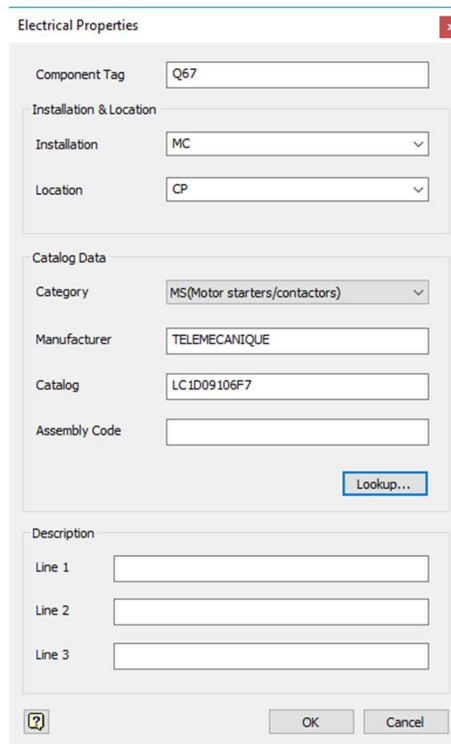
[Defining Electrical Intelligence to a 3D Part](#)

The part will be added to the Component tree. The icon for a symbol inserted in Inventor only and not in the AutoCAD Electrical is different .

The part will be inserted into the default Installation & Location as defined previously.








Right click over the part to change the electrical properties. Select  **Electrical Properties**



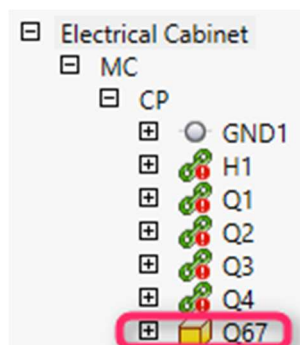
The component tag, installation, location, manufacturer, catalog and description can be changed or defined.


Select 

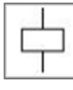
You can associate existing parts or assemblies to an AutoCAD Electrical only component  by using the command  **Assign to Existing in Assembly** . This is available by right clicking over the electrical component  in the Location View

The Inventor assembly must be saved  or synchronised 

The component can be inserted into the AutoCAD Electrical schematic from the *Project Manager > Location View*



Right click over the component and select  **Insert From Catalog Browser**

Right click over the highlighted part and select the schematic image  or if a schematic symbol hasn't been associated (no image) 