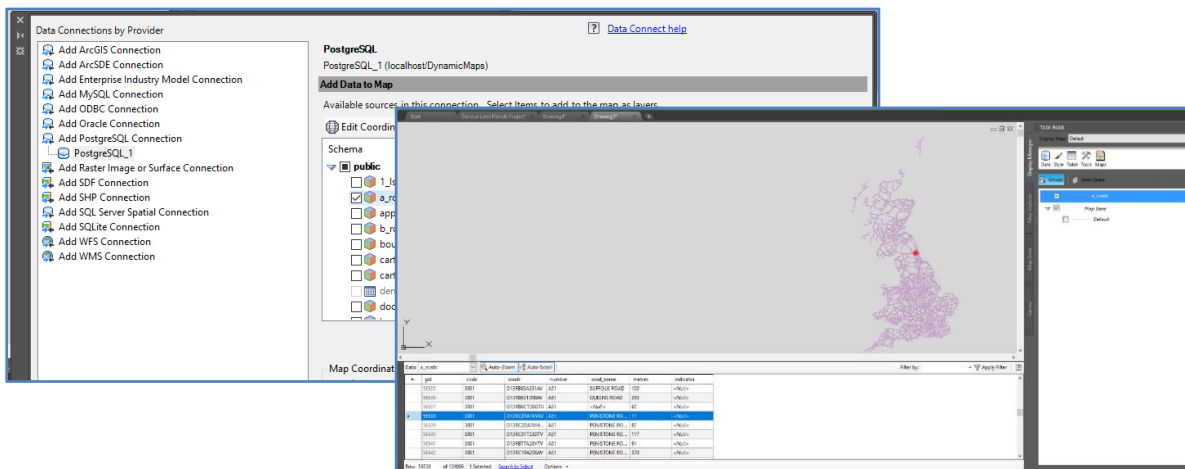


## AutoCAD Map 3D – Accessing Open Street Map

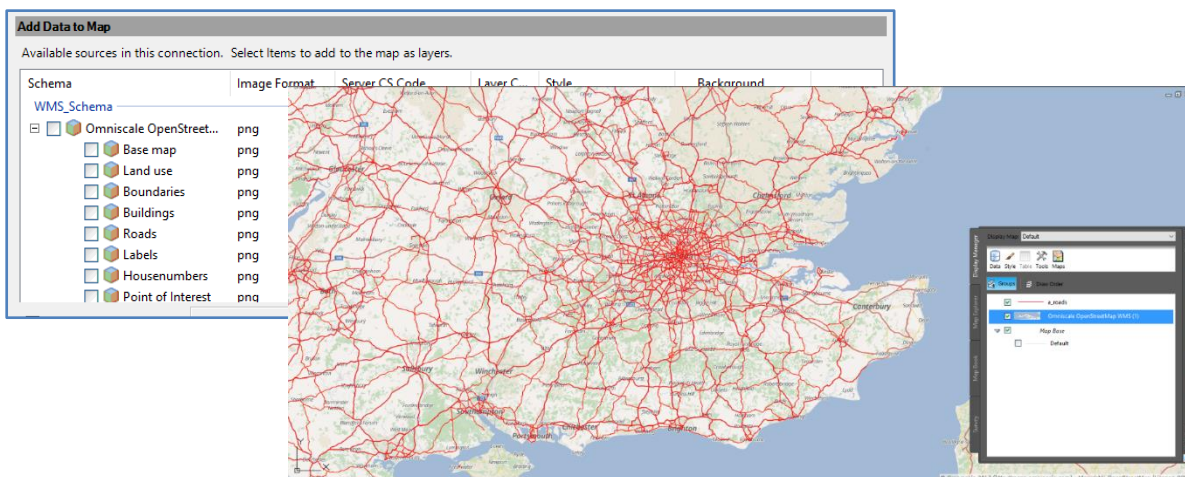
In a previous White Paper I explored accessing **Open Source datasets** in Autodesk Map 3D:

<https://www.cadlinecommunity.co.uk/hc/en-us/articles/115002302589-AutoCAD-Map-3D-Integrating-Open-Source>

In that document we investigated using the **Data Connection Tool** to connect to spatial datasets within a **PostGIS Database...**



and then raster layers from **Web Map Services**.



I now want to update that paper, by discussing some other sources of Web Map Services that provide basemapping for Map3D, specifically where you can access **Open Street Map Services** from.

This seems specifically helpful, because I have now lost my option to utilise the in-built **MAP ON** option which historically provided me access to **Bing** mapping, providing a backdrop map of both Roads and Aerial imagery.



In the previous White Paper we discovered that you could access alternate Web Map Services, such as **OpenStreetMap** (OSM), by signing up for a free account with the **Omniscale service** - <https://maps.omniscale.com/en/> - however this service is only provided free for a limited period.

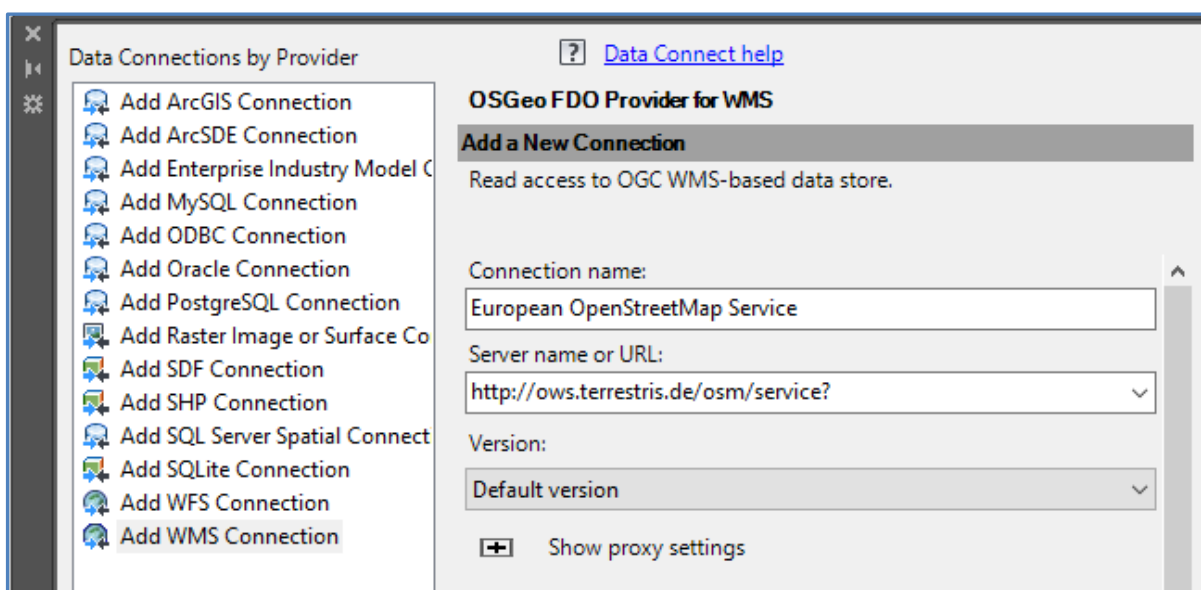
So let’s now explore some alternate sources to access OpenStreetMap!

After a quick Google search for OpenStreetMap Web Services, I landed on this page - <https://wiki.openstreetmap.org/wiki/WMS> - which immediately provided me with a table of options to choose from:

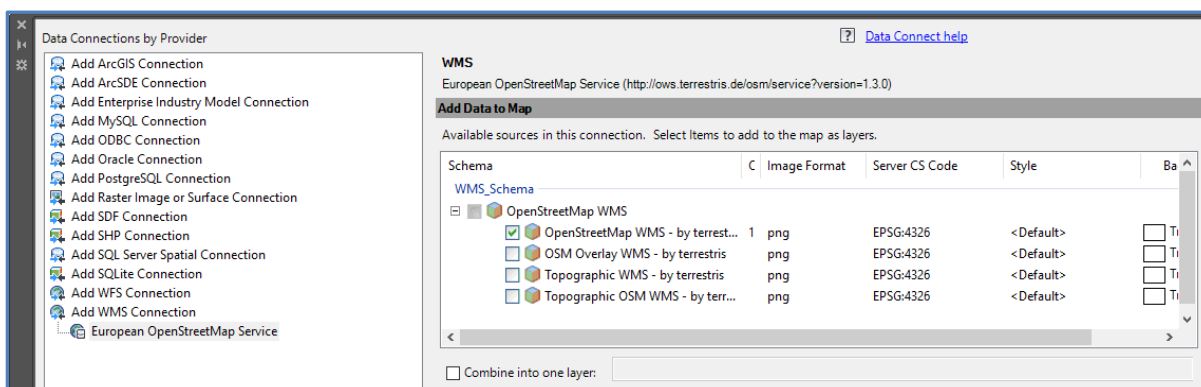
Name	Free	Updated	Coverage	Style	Layers (roads, buildings, etc)	Native support for local projections
<a href="#">Geofabrik</a>	no	minutely	World	Mapnik default custom styles		yes
<a href="#">HistOSM</a>	yes	weekly		only historic objects		
<a href="#">irs.gis-lab.info</a>	yes		World	Mapnik default satellite images		
<a href="#">IT-Consult Halle</a>	noncommercial only	daily	DE, CH, AT	custom style	yes	yes
<a href="#">mundialis</a>	yes	weekly	World	custom style		
<a href="#">Omniscale</a>	No, free trials	minutely	World	custom style	yes	yes
<a href="#">terrestris</a>	yes	weekly	World	custom style		
<a href="#">TileHosting</a>	no	weekly	World	custom style		yes
<a href="#">WhereGroup</a>	only basic edition		Europe	custom style		
<a href="#">WORLD OSM WMS</a>	yes	weekly	World	custom style		

I decided to choose this European web service - <http://ows.terrestris.de/dienste.html#wms> – where I found this URL:  
<http://ows.terrestris.de/osm/service?>

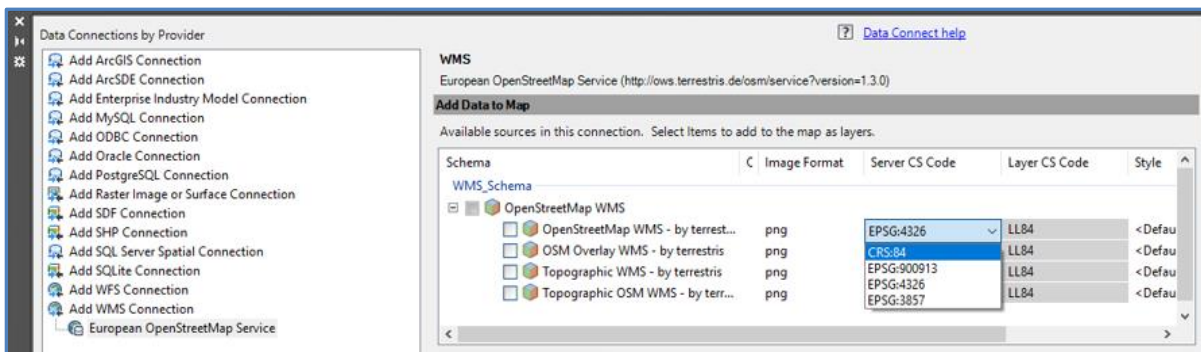
To test this Web Map Service, in Map3D choose > **Data > Connect to Data** and from the **Providers** list choose **Add WMS Connection**. The **Server Name** will be the URL as per the above, so you can simply copy and paste the web address into the **Server Name or URL** box.



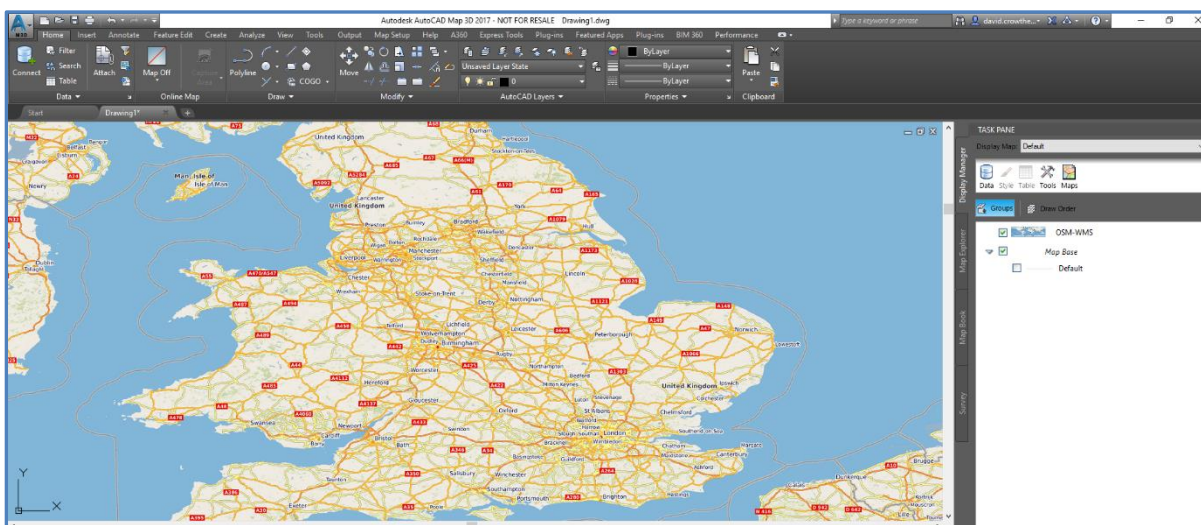
Press > **Connect** and leave the **username** and **password** values blank on the login window. Map 3D will now connect to OSM and allow you to choose specific sub layers that you wish to view. In this example we will tick to choose the first option and press **ADD to MAP**.



**Note** – that it will be good practice to load the WMS layers in the same **Coordinate Reference System (CRS)** as the map is currently projected within Map3D. To change the CRS, simply click in the **Server CS code** and change the CRS as required.



Having pressed **Add to Map**, you can now see that Map 3D has accessed the Web Map Service and added OpenStreetMap as a basemap into your drawing.



Try adding this Web Map Service into your map,.. and then why not do a **google search** yourself and see what WMS resources you can find to provide Open Source background mapping into your projects.