

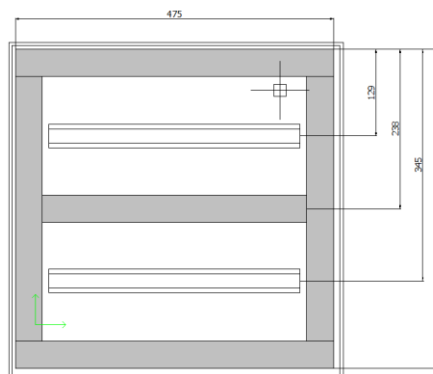
## elecworks™ Tips & Tricks

### Creating a Panel Layout Template (Macro)

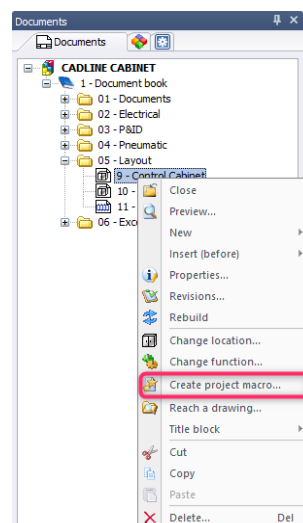
A panel layout can be saved as a macro (template) and can be recalled for new projects thus speeding up your design process. The template panel layout can even include dimensions. This is extremely useful if you are trying to standardise on your design aesthetics.


Whether the layout template includes the cabinet or just the backplate depends on the type of cabinet e.g. wall mounted, floor standing or multiple compartment cubicle. It can also include fixings, gland plates, glands, trunking and DIN rail for example.

Create a layout you wish to keep e.g.

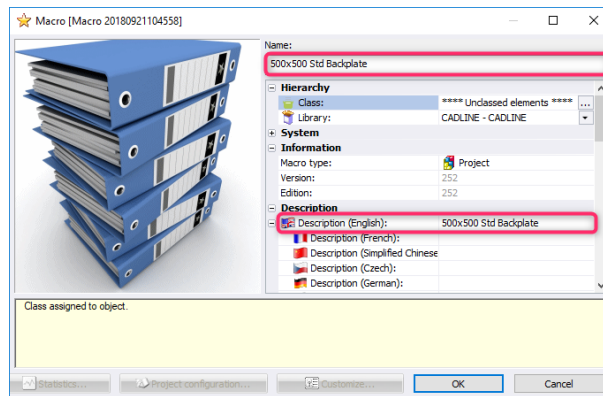


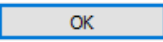
Right click over the drawing in the *Documents Browser*.



Select  Create project macro...

Fill in the *Macro* data accordingly. As a minimum you should enter a *Name* and a *Description*.



Select 




The new macro will now be saved. If you wish to edit at a later stage, the macro is available in the

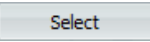
To insert the template into another project:

Right click in the *Document Browser* over the *project, document book or folder* >  Insert project macro...

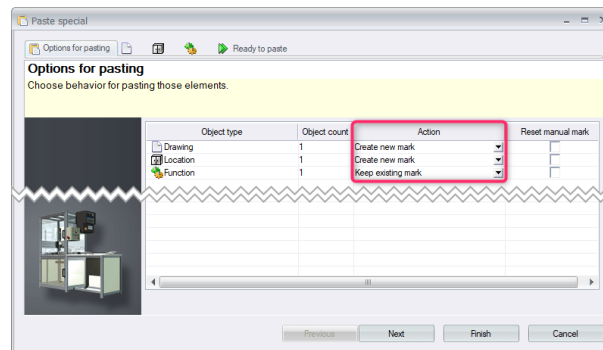
If you are unable to see the required macro and to view all available *project* macros:

Select the  Filters tab >  Remove filters

Highlight the template layout you wish to insert.

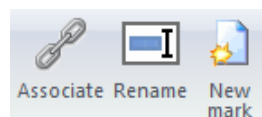
Select 

Select whether you wish to keep, create or associate the values of the object type marks.



Select

You can *Associate*, *Rename* and create a *New Mark*.



Select

**Where a project has several locations already defined, pay special attention to associating the layout template to the location you wish it to be assigned.**