

# elecworks™ Tips & Tricks

## Termination Types

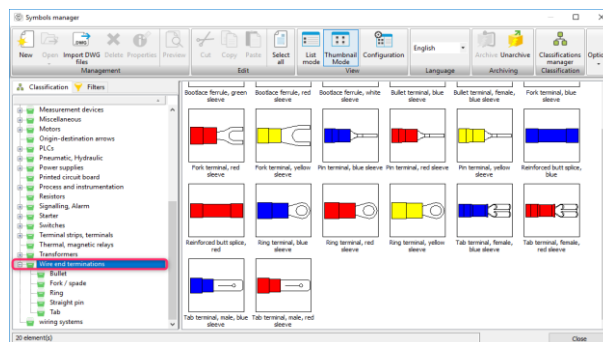
Termination types are used to define how the cable cores, or the wires, are terminated on the components and can be reported within a cable from/to or a wire from/to report. They can be assigned within the manufacturer part detail or within the schematic component details.

New termination types can be created by the user and should be added within the *Library*.



Symbols manager

Select Library ribbon tab > *Wire end terminations*

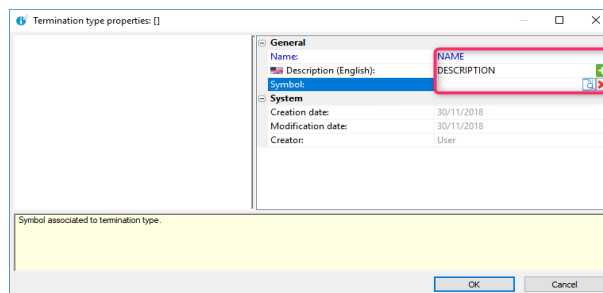
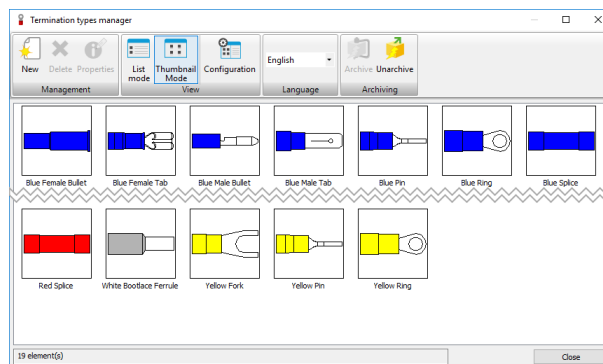


Existing ones can be copied Copy and modified Properties...

Once within the library, they can then be defined within the *Terminations types manager*.



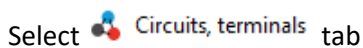
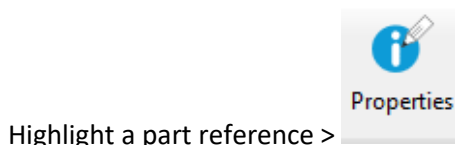
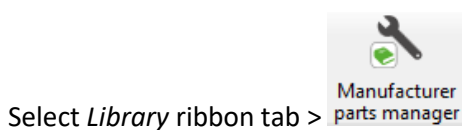
Select Library ribbon tab > Customisation pane >



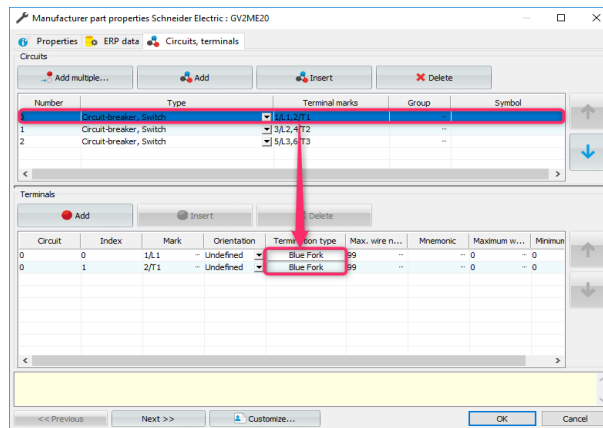
Define a *Name*, *Description* and associate a library *Symbol*.

The **NEW Termination type** is now available for selection.

### Associating Termination Types To A Manufacturers Part Reference

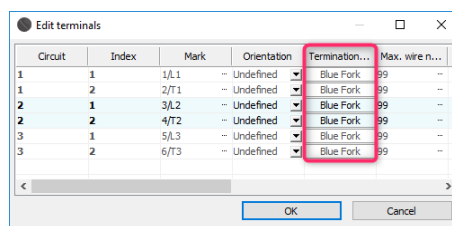


For each circuit within the part reference, you can define the terminations types.



### Associating Termination Types To A Component

When a schematic component has been placed, you can *right click* > Edit symbol terminals...



### Reporting

The termination types assigned are then shown within the reports:

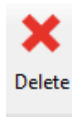
Wire number	Origin	Origin termination type	Destination	Destination termination type
L1-2	=F1+L1-K1:1	Blue Fork	=F1+L1-Q1:2/T1	Blue Fork

The following fields should be included within the report by editing Column management

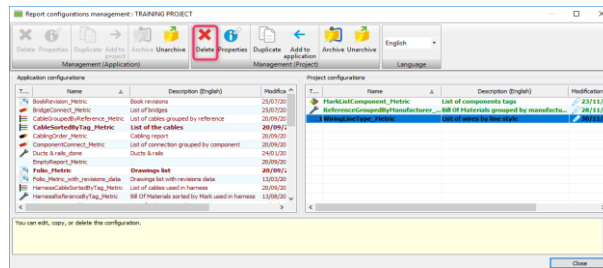
- Origin termination type
- Destination termination type

If the above fields are not shown within the available fields, the report you are using is from an older version and should be deleted from the project.





Highlight the specific report and select



elecworks™ will revert to the new *Application* report which has the fields. If in doubt, use *Archive* prior to deleting!