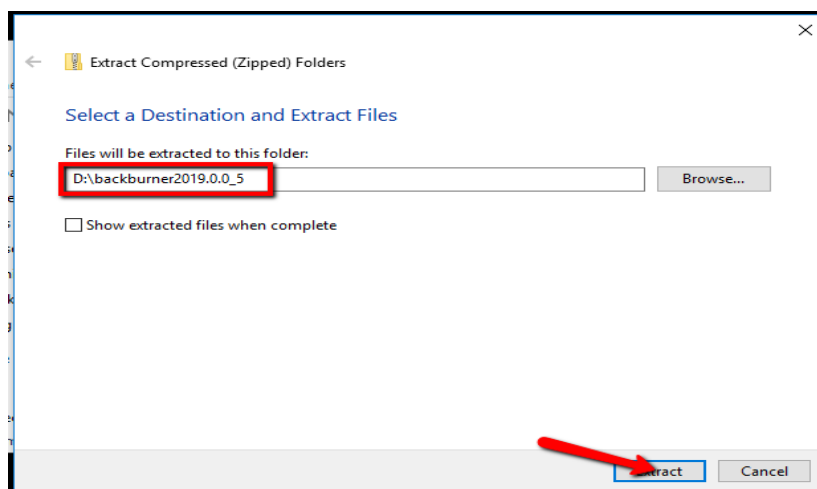
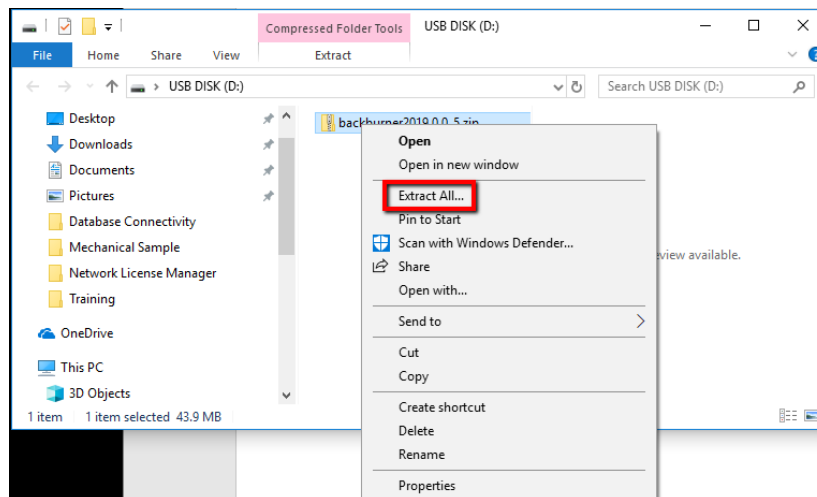
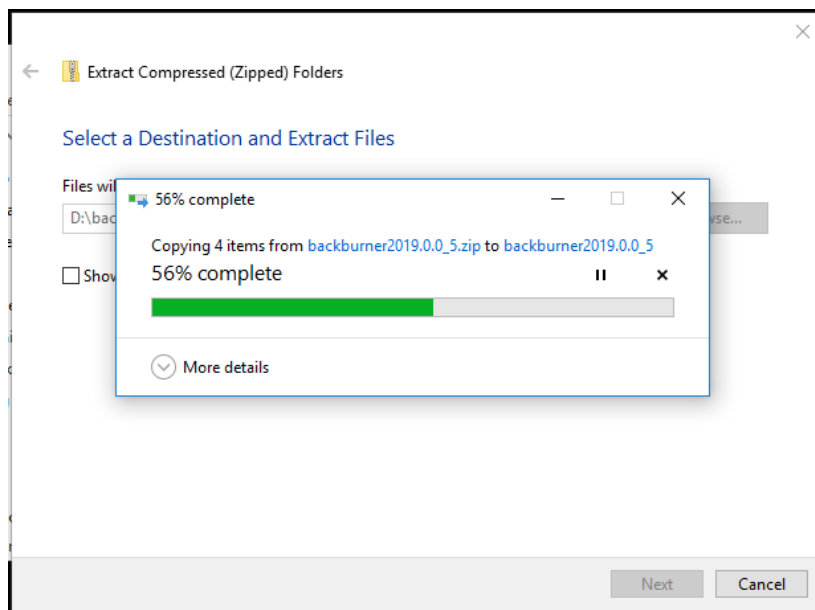


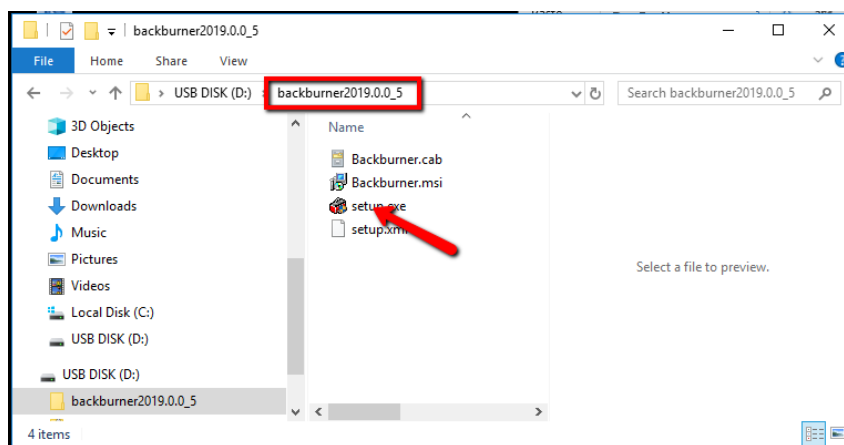
# Installing Backburner for 3ds Max 2019

- Extract the downloaded zip file, (backburner2019.0.0\_5.zip).

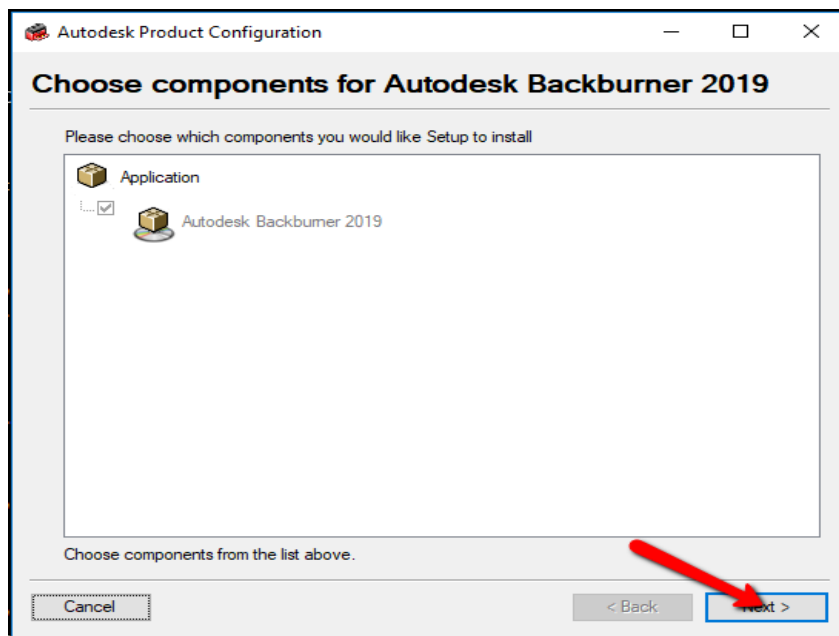




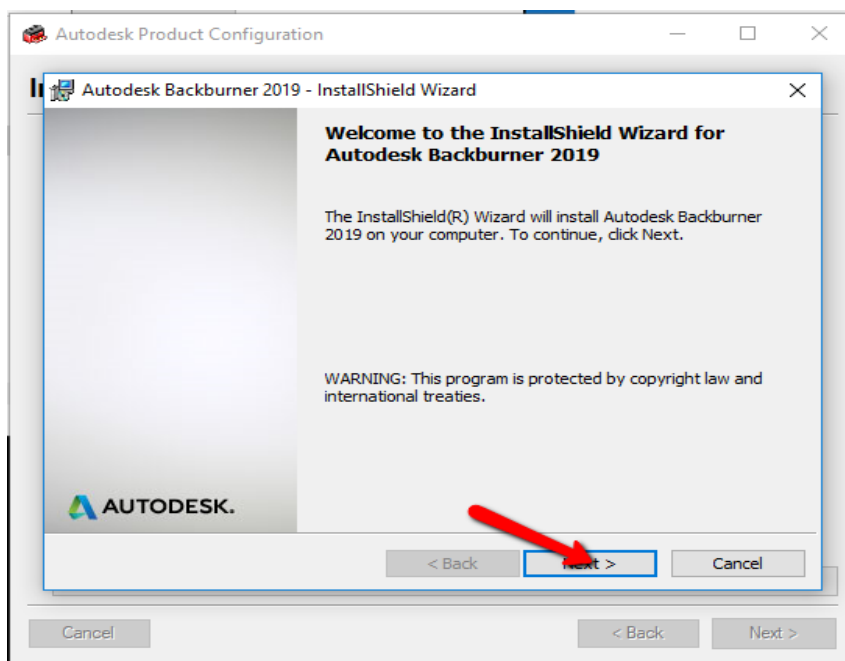
- From the extracted media folder, run the setup.exe program.



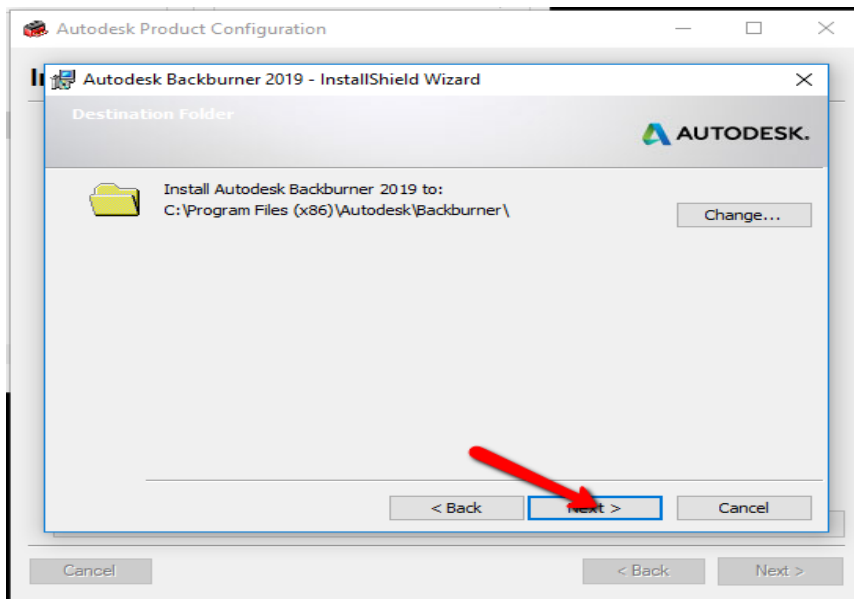
- Click Next on the 'Choose components for Autodesk Backburner 2019'.



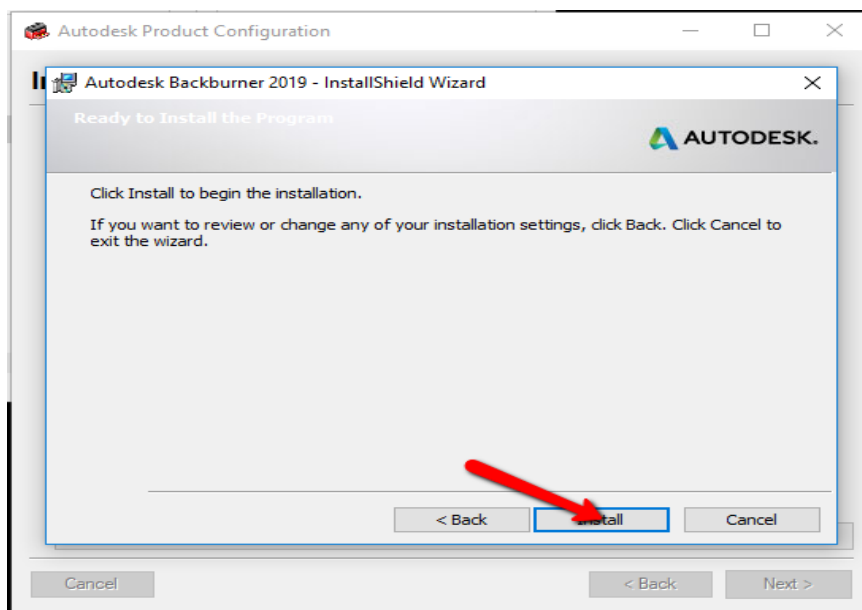
- Click Next on the "InstallShield Wizard".

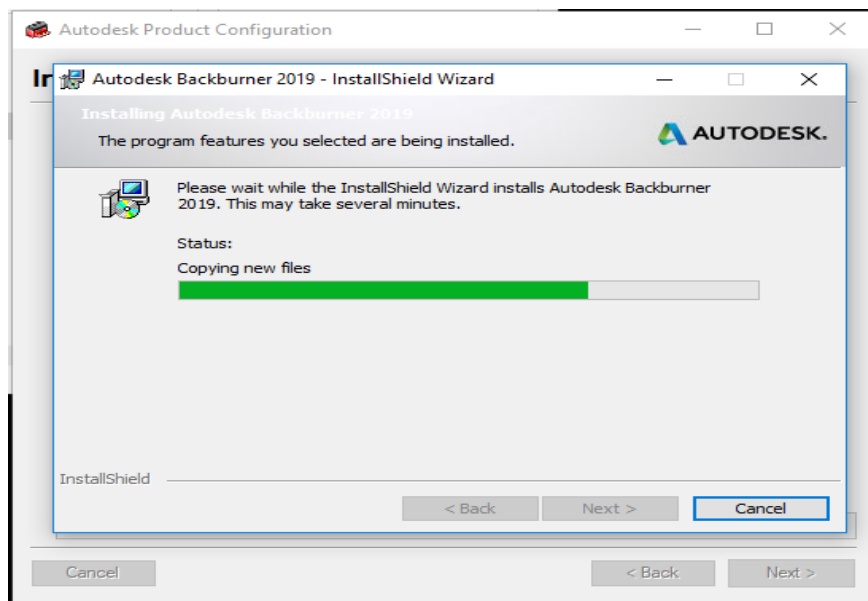


- Leave the "Destination Folder" as default and click Next.

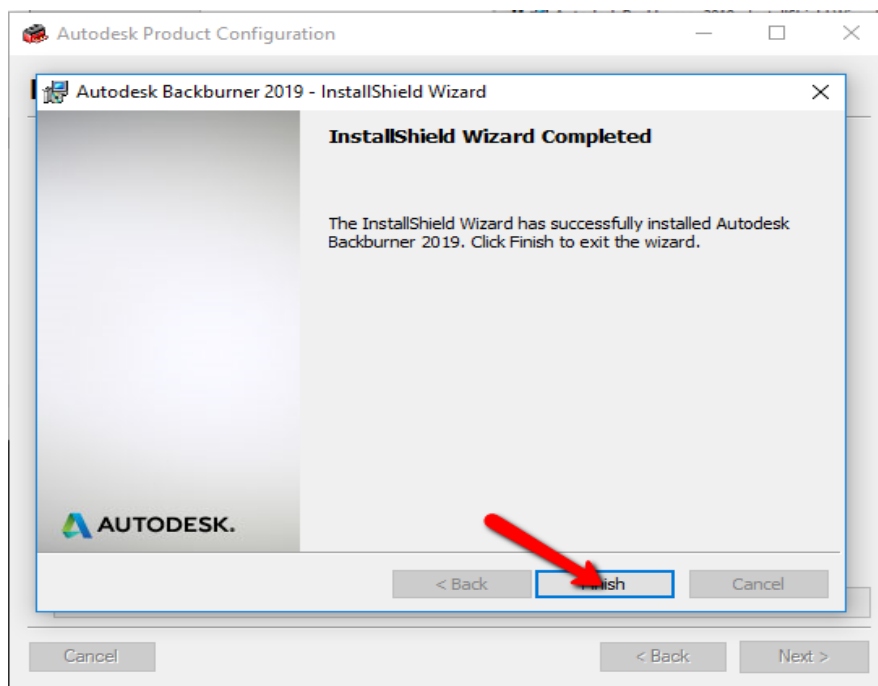


- Click Install.





- To complete, click Finish.



- Run the installation on all machines to be used for render nodes.