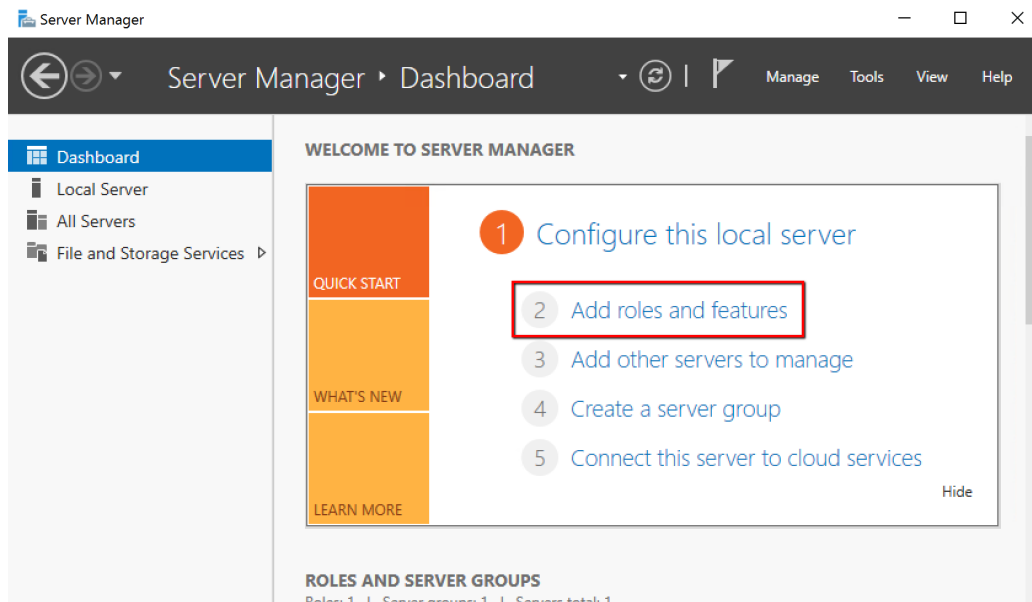
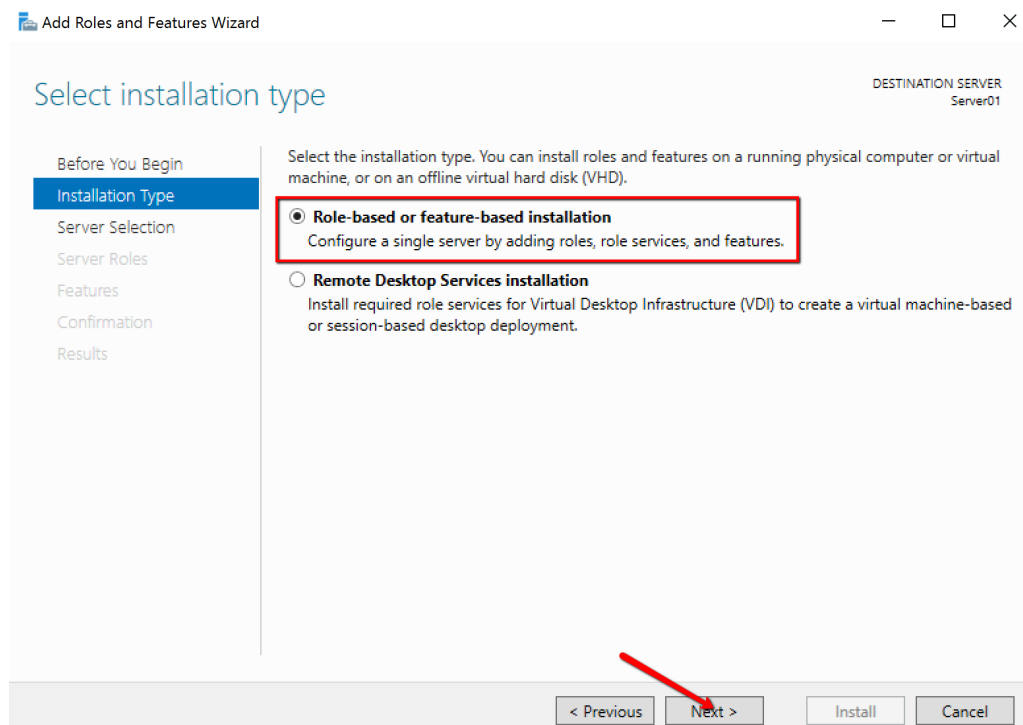


IIS Requirements for Server 2012

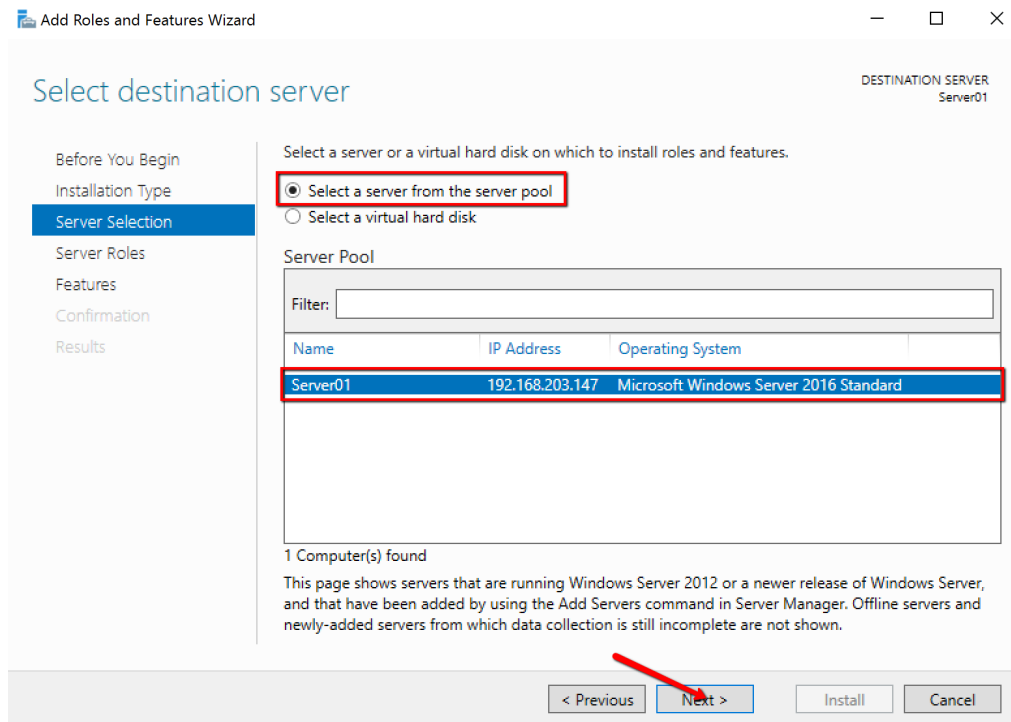
- Launch the Add roles and features option from the Server Manager Dashboard.



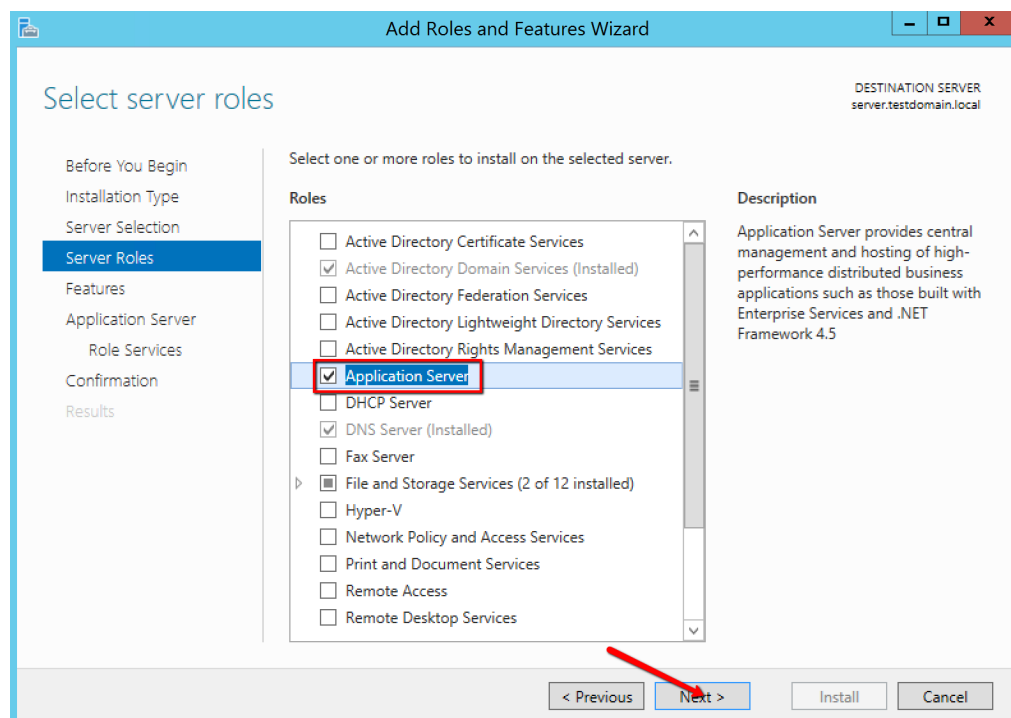
- Select Role-based or feature-based installation.



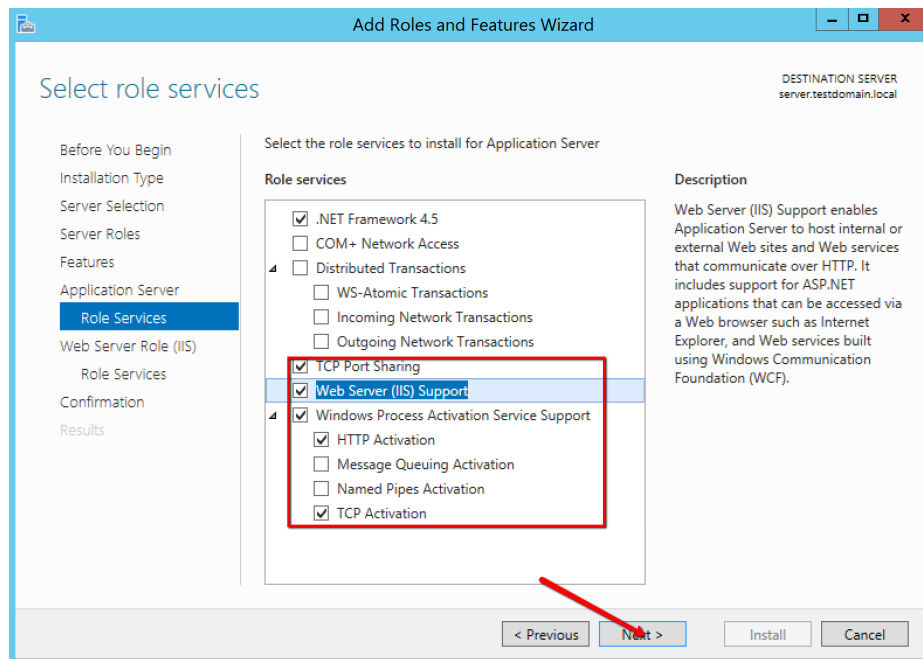
- Select Server to continue.



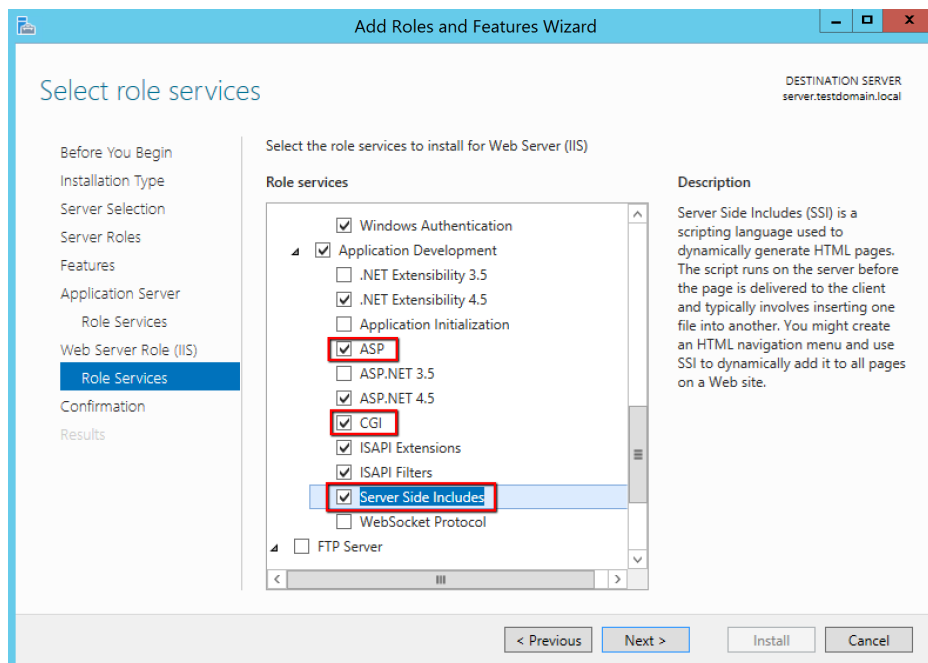
- Select Application Server.



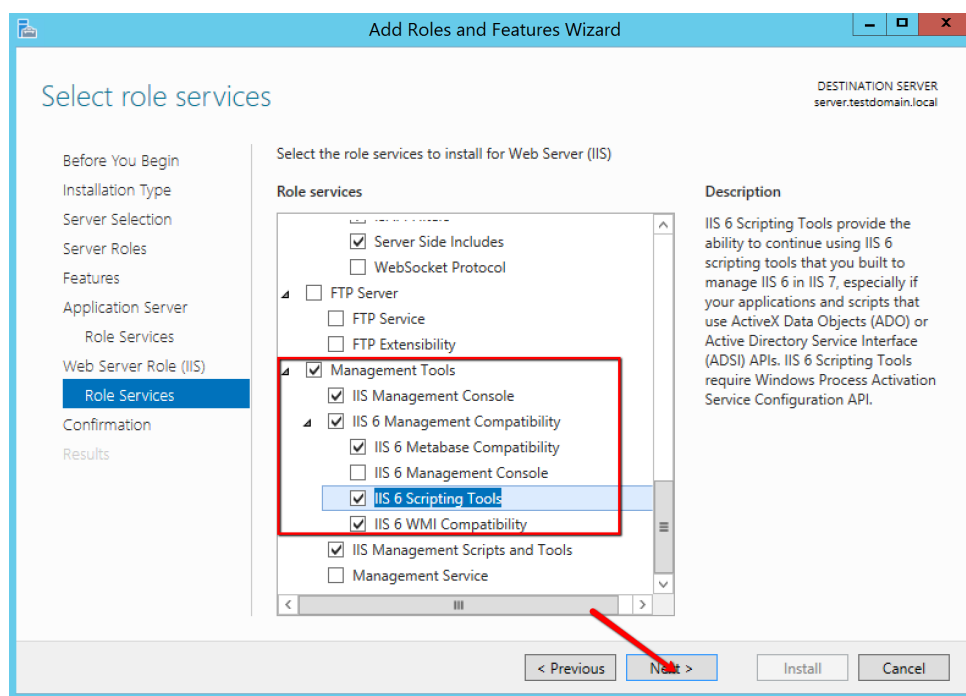
- Select Next to continue to the Application Server Roles page.
- Check the boxes for TCP Port Sharing, TCP Activation, HTTP Activation and Web Server (IIS) Support. If prompted to install additional role services and features, click Add Features when prompted.



- Select Next to continue to the Web Server Roles page.
- Under Application Development, check the boxes for ASP, CGI and Server Side Includes:



- Under Management Tools, expand IIS 6 Management Compatibility and select IIS 6 Scripting Tools. If prompted click to add additional features.



- To complete, select Install.

