

Setting Up SQL for AutoCAD Electrical

Product AutoCAD Electrical

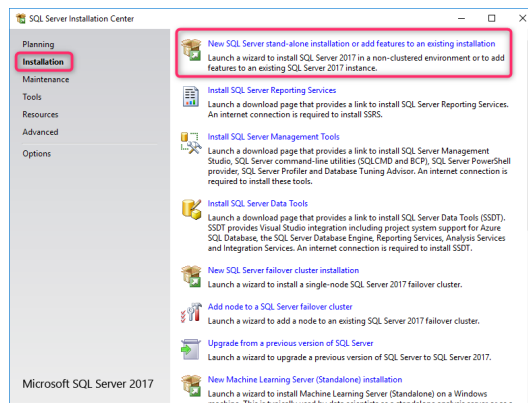
With later versions of AutoCAD® Electrical, you can change the default catalogue database from MS Access to SQL. This makes it easier to link AutoCAD® Electricals’ parts database to an ERP system, especially if it is SQL based. SQL knowledge is required, and a middleware program may be needed to link the two systems together (Cadline has a development team that can assist).

In addition, working with an SQL server database can speed up connection time over a network and can provide more stability, specifically if you have had users incorrectly editing the parts database directly with MS Access.

Creating A New SQL Server Instance:

For AutoCAD® Electrical to have its parts database and footprint database in the SQL format, a new SQL instance should be created. This should be greater than SQL2008.

On your server, run *SQL Server 20## Installation Centre*.



Select

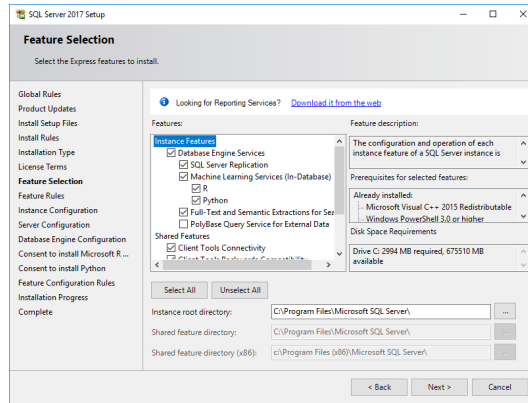
Select (if no issues)

Select Perform a new installation of SQL Server 2017
Select this option if you want to install a new instance of SQL Server or want to install shared components.

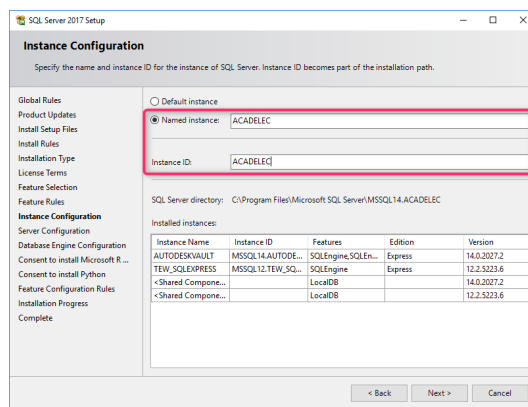
Select

Select I accept the license terms.

Select Next >



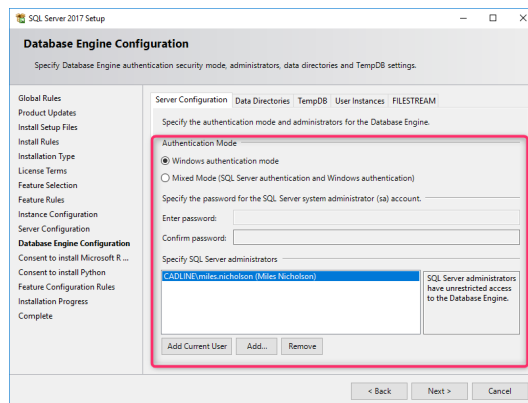
Select Next >



Select Next >

Select Next >

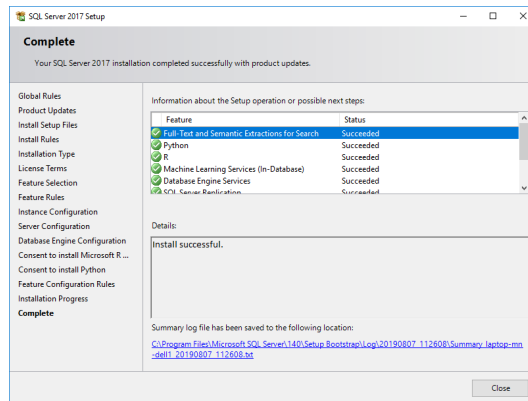
Define the required access rights and authentication:



Select

Select (where necessary)

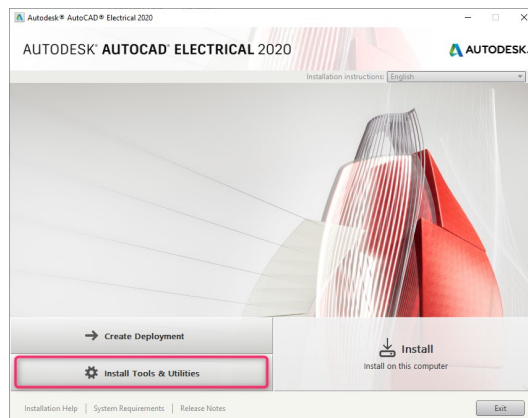
Select



Select

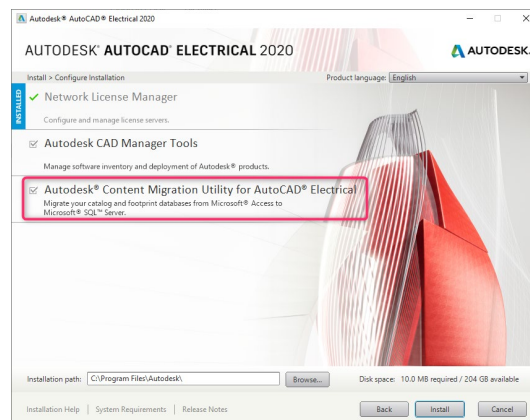
Install the Autodesk® Content Migration Utility for AutoCAD® Electrical (not installed as default):

Run the AutoCAD® Electrical installation setup.



Select





Select 

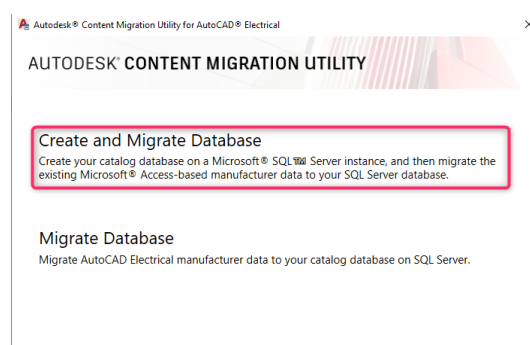
Select  (when installation has completed)

The Autodesk® Content Migration Utility for AutoCAD® Electrical will now be available from your  menu and displayed on your desktop:

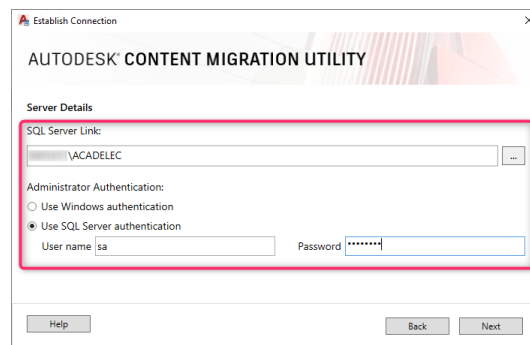


To Start the Migration Workflow:

Run  Autodesk® Content Migration Utility for AutoCAD® Electrical

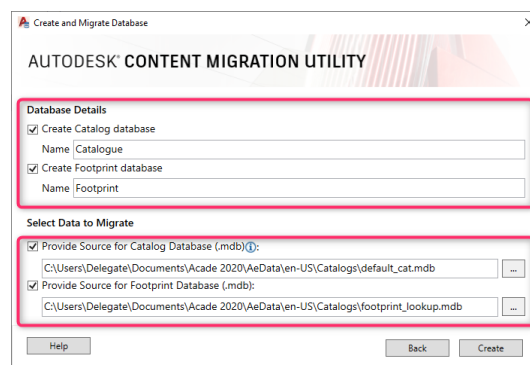


- Define the server name and instance (<<server name>>\<<instance name>>).
- Define the required access rights and authentication previously setup when the SQL Instance was created:



Select

- Define a name for the *Catalog database* e.g. Catalogue
- Define a name for the *Footprint database* e.g. Footprint
- Browse to the existing AutoCAD® Electrical *default_cat.mdb* (source for the Catalog database)
- Browse to the existing AutoCAD® Electrical *footprint_lookup.mdb* (source for the Footprint database)

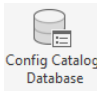


Select

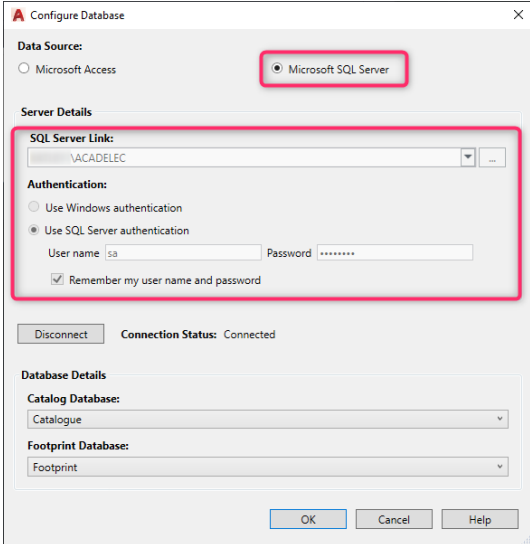
Select (once completed)

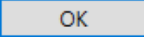
To Configure AutoCAD® Electrical to use Microsoft® SQL Server

Run  AutoCAD® Electrical

Select *Project* ribbon tab > *Project Tools* panel > 

- Select *Microsoft® SQL Server*
- Define the required access rights and authentication previously setup when the SQL Instance was created:
- Select the *Catalog Database* ↓ > pick the correct table name e.g. Catalogue
- Select the *Footprint Database* ↓ > pick the correct table name e.g. Footprint



Select 

This only changes the format of the parts and the footprint databases and does not alter other databases used within AutoCAD® Electrical such as the language, schematic lookup or indeed the project scratch databases