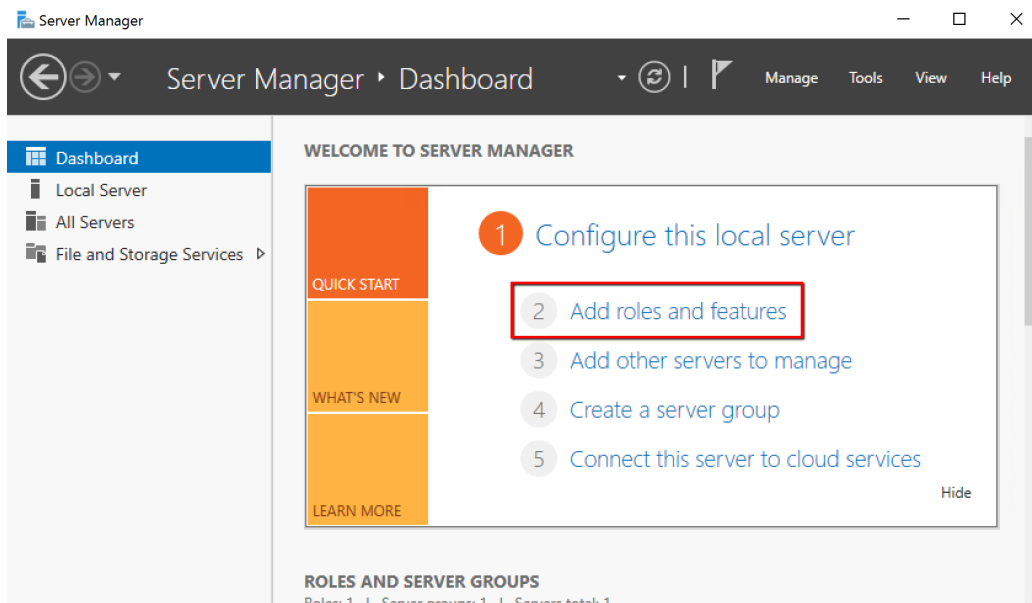
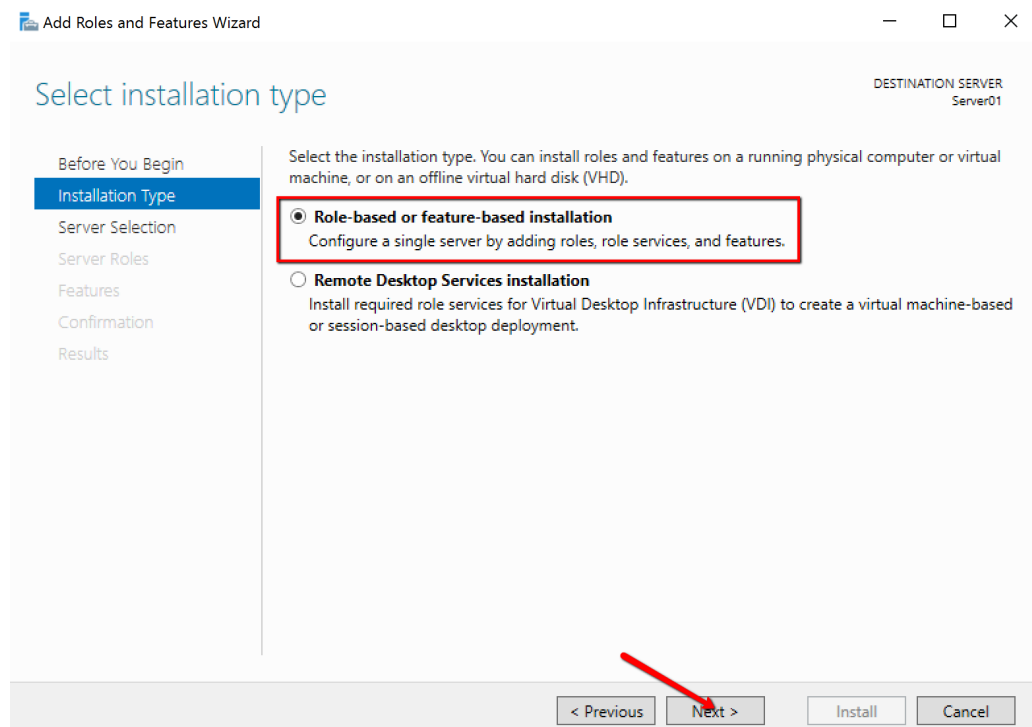


# Revit Server IIS Requirements for Server 2016

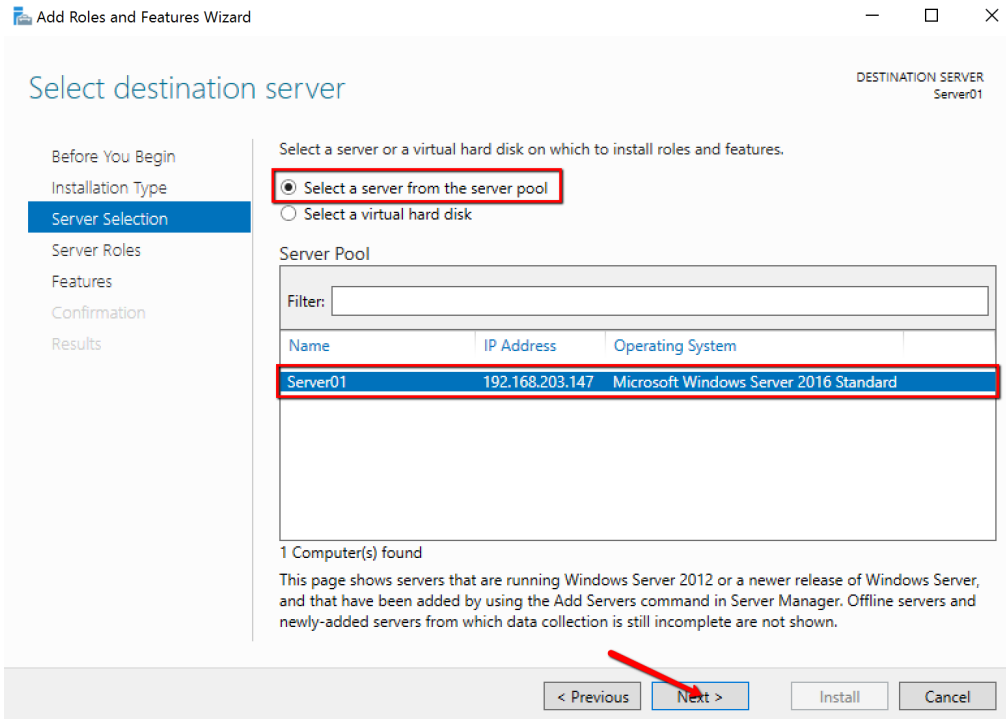
- Launch the Add roles and features option from the Server Manager Dashboard.



- Select Role-based or feature-based installation.



- Select Server to continue.



DESTINATION SERVER  
Server01

Select a server or a virtual hard disk on which to install roles and features.

☒ Select a server from the server pool  
☐ Select a virtual hard disk

Server Pool

Filter:

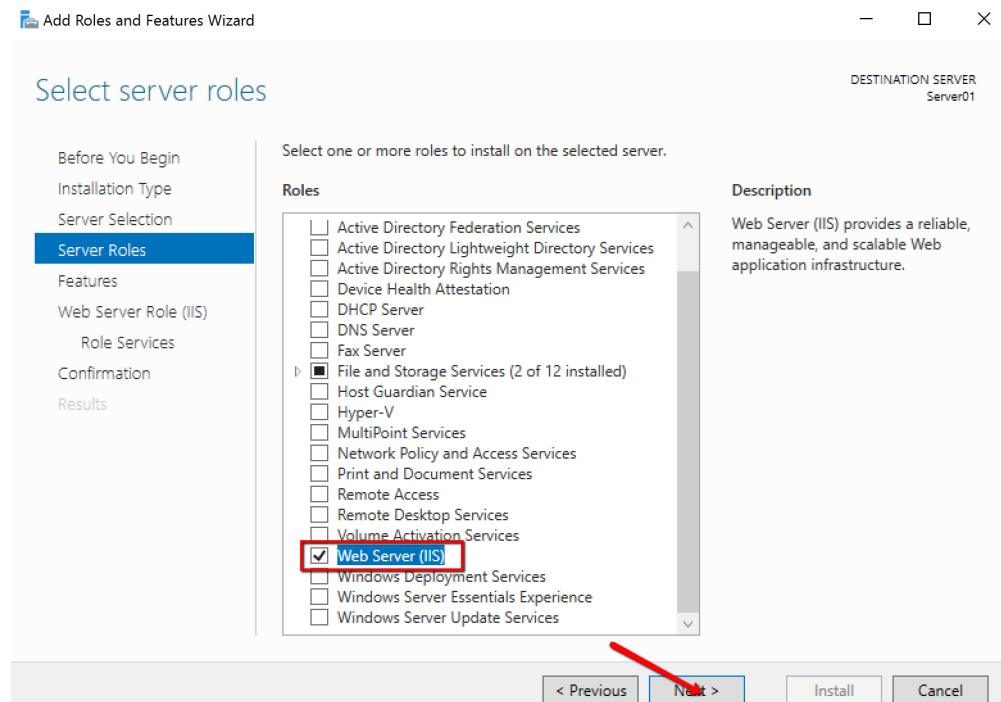
Name	IP Address	Operating System
Server01	192.168.203.147	Microsoft Windows Server 2016 Standard

1 Computer(s) found

This page shows servers that are running Windows Server 2012 or a newer release of Windows Server, and that have been added by using the Add Servers command in Server Manager. Offline servers and newly-added servers from which data collection is still incomplete are not shown.

< Previous Next > Install Cancel

- Select Web Server (IIS) and add any features that are automatically required if prompted.



DESTINATION SERVER  
Server01

Select one or more roles to install on the selected server.

Roles

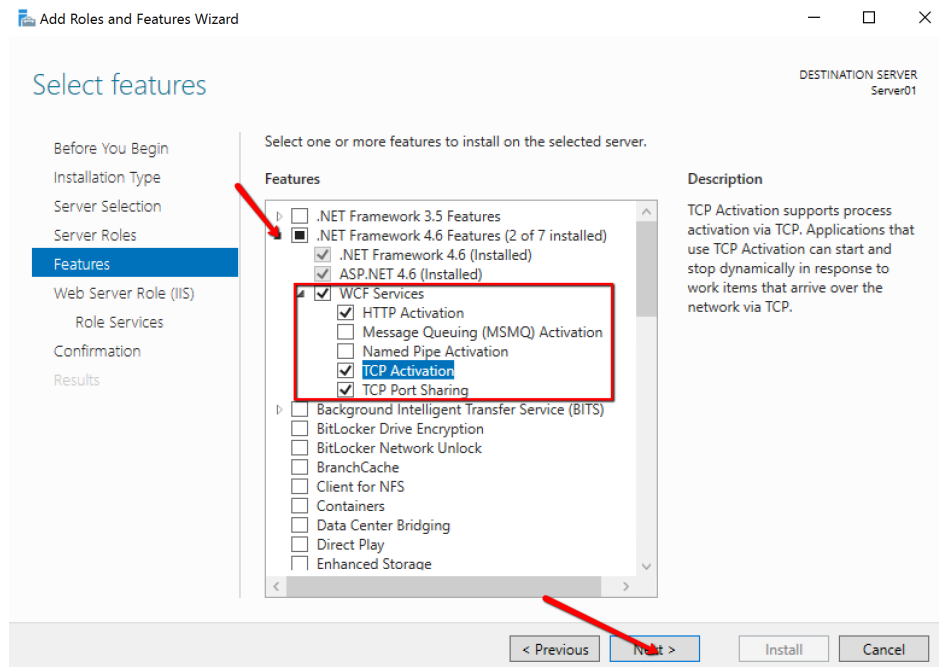
- ☐ Active Directory Federation Services
- ☐ Active Directory Lightweight Directory Services
- ☐ Active Directory Rights Management Services
- ☐ Device Health Attestation
- ☐ DHCP Server
- ☐ DNS Server
- ☐ Fax Server
- ☒ File and Storage Services (2 of 12 installed)
- ☐ Host Guardian Service
- ☐ Hyper-V
- ☐ MultiPoint Services
- ☐ Network Policy and Access Services
- ☐ Print and Document Services
- ☐ Remote Access
- ☐ Remote Desktop Services
- ☐ Volume Activation Services
- ☒ Web Server (IIS)
- ☐ Windows Deployment Services
- ☐ Windows Server Essentials Experience
- ☐ Windows Server Update Services

Description

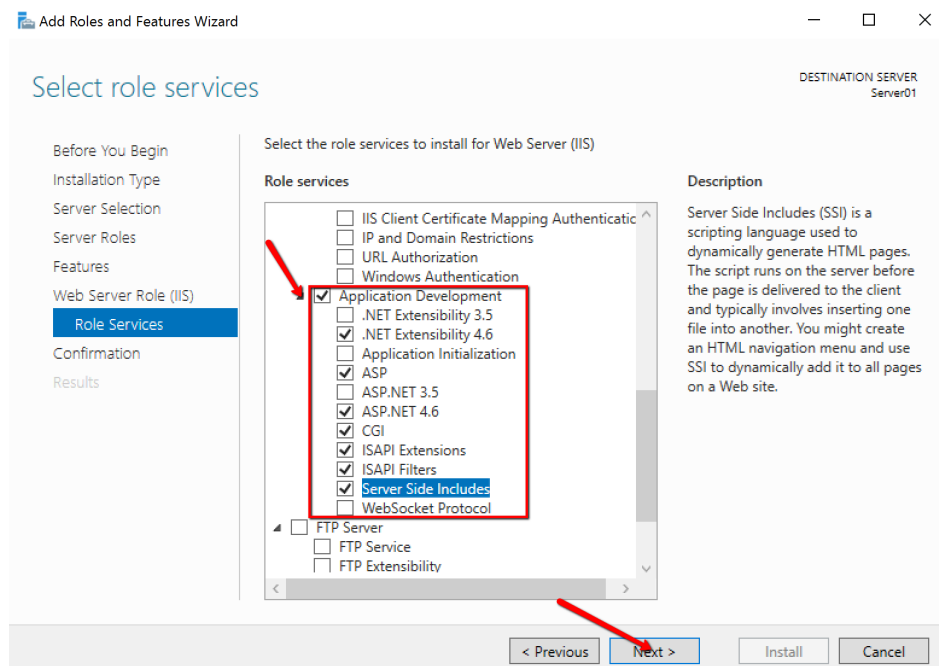
Web Server (IIS) provides a reliable, manageable, and scalable Web application infrastructure.

< Previous Next > Install Cancel

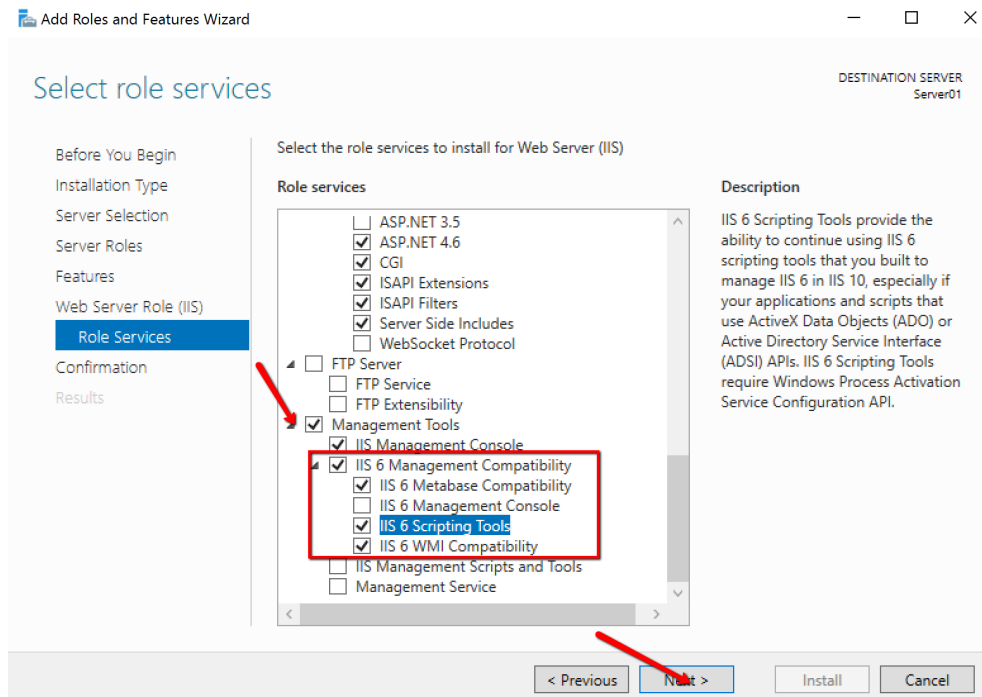
- Install the features, HTTP Activation, TCP Activation and TCP Port Sharing by:
  - o Expanding the .NET Framework 4.6 Features >> WCF Services



- From the Role Services, install, ASP, CGI and Server Side Includes by:
  - o Expanding Application Development



- Again from the Role Services, install, IIS 6 Metabase Compatibility and IIS 6 Scripting Tools by:
  - o Expanding Management Tools >> IIS 6 Management Compatibility



- Confirm installation and select Install.

