

## Installation check Country kit UKIE

### Civil 3D®

Guide by: John van Rijn

When the country kit is applied, the following element should be visible and working in Civil 3D.

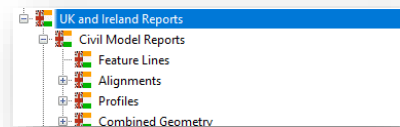
On the workstation there must be an app installed. This link should be directly after the installation has been started. When started for first time, an initial secondary installer will start, otherwise Civil 3D will start with the UKIE template. (Check settings Toolspace: General, Multipurpose styles, Code Set Style, UKIE Plan and 3D).

Often the country kit is not properly installed by missing rights on the workstation. To check if the country kit is working correctly, please check the following items:

### Item check one

#### Toolspace

- UK and Ireland reports



### Item check two

#### Toolpallet

The tool pallet must contain UKIE pallets.

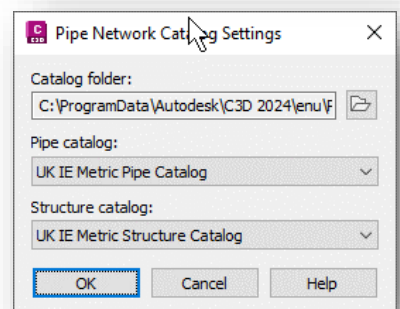
- UKIE Design
- UKIE Junction Assemblies
- DMRB Road Sections
- And more....



### Item check three

#### Pipe Network catalog Setting

Under this setting you can select the UK IE catalogs for Pipe and Structure



When all of this is available, the installation can still have an issue with Assemblies. Please insert one or more assemblies into your drawing. When no notifications are displayed, we can assume that all is working.

## Sources:

C:\ProgramData\Autodesk\C3D 202.\enu\Subassemblies\UKIE

C:\ProgramData\Autodesk\C3D 202.\enu\Assemblies\UKIE

C:\Users\...\AppData\Local\Autodesk\C3D 202.\enu\Template

C:\ProgramData\Autodesk\C3D 202.\enu\Pipes Catalog

C:\Users\...\Documents\UKIE Content Kit for Autodesk Civil 3D 2024 Documentation

[civil-3d-country-kits-for-united-kingdomo-ireland downloads](#)



0330 551 9420



sales@cadline.co.uk



www.cadline.co.uk