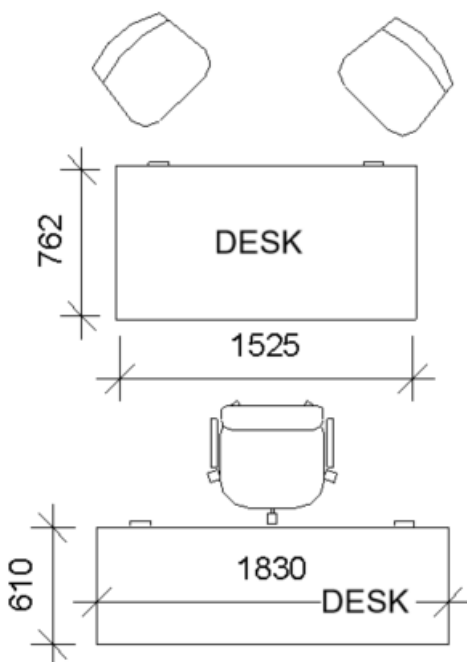


Revit Architecture 2019 – Shared Parameters

Revit Architecture 2019: Shared Parameters

Shared Parameters in Revit – Overall Concept

Consider an office layout. Select a piece of furniture and examine the parameters unique to this item. (Click Edit Type first).



In this exercise we will add parameters to the desk furniture.

Shared Parameters in Revit – Shared Parameter File

Creating a Shared Parameter involves a few steps. The first is a one time set-up process involving an external Shared Parameter file (txt). After that, each time you want to create a Shared Parameter you simply access the Shared Parameter file.

- Create or access a Shared parameter file.
- Build individual Shared parameters.

Manage Tab: Settings Panel: Shared Parameters Button

Click create – browse to a location preferably on your network server.

Name: Office Standard Parameter – **Save.**

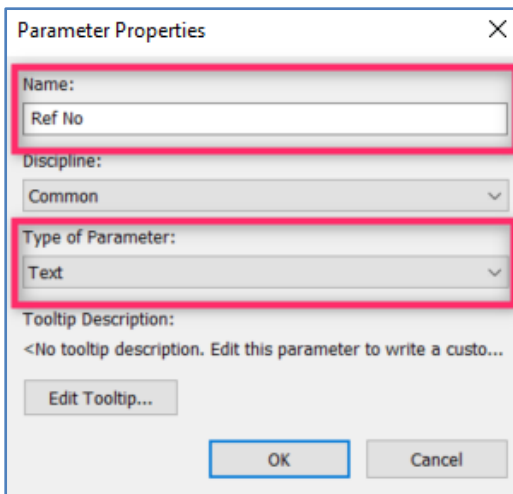
Create a Parametric Group. Groups new name: **Furniture and Equipment.**

Once you create a group, that will make the New Parameter button available. Click **New**.
 You want each piece of furniture to have a unique reference number.

Parameter Properties

Name: Ref No

Type: Text



Parameter Properties

Name:

Discipline:

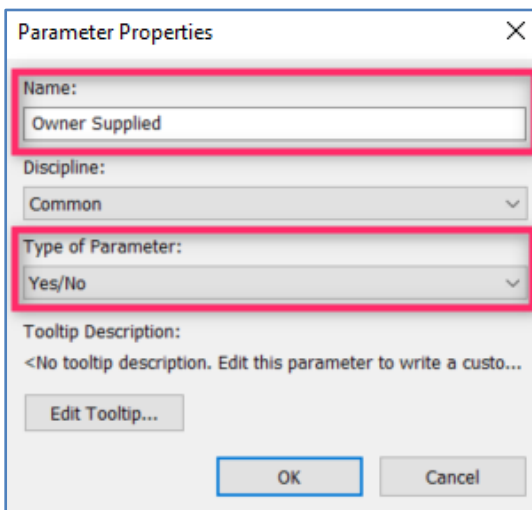
Type of Parameter:

Tooltip Description:
 <No tooltip description. Edit this parameter to write a custo...

New again:

Name: Owner Supplied

Type: Yes/No Click **OK**.



Parameter Properties

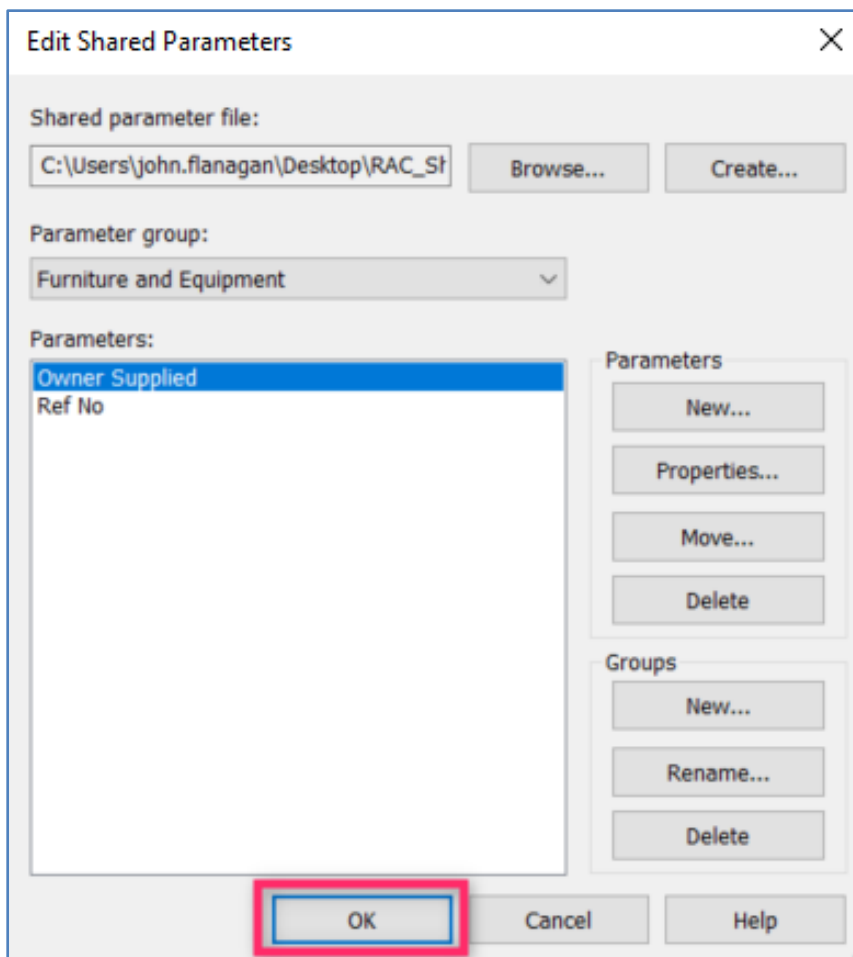
Name:

Discipline:

Type of Parameter:

Tooltip Description:
 <No tooltip description. Edit this parameter to write a custo...

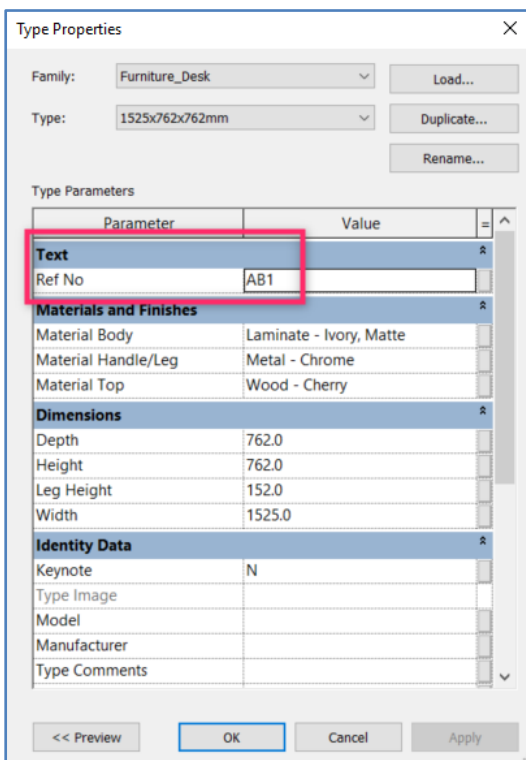
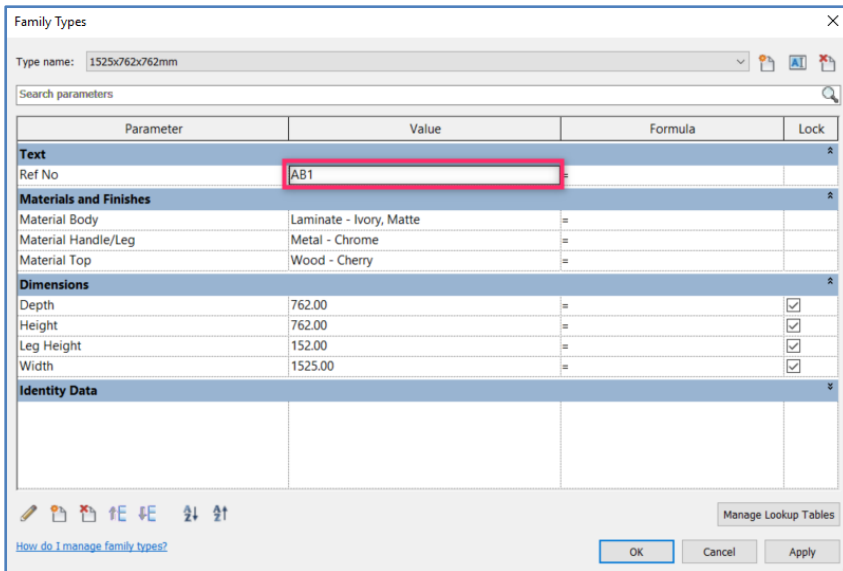
Once the two parameters are created, they will be listed in the Edit Shared parameters dialogue box. Click **OK** twice to exit all dialogue boxes.



Shared Parameters in Revit – Access Shared Parameters in Families and Project files.

There are a couple of ways that you can access Shared Parameters. You can apply them directly to the families. So you could select individual furniture items (e.g. desk) – Edit the family. Once in the Family editing environment, go to the Family Types dialogue, add a Parameter, select Shared Parameter, click Select and then choose from the available groups that are listed and whichever Parameter you want to add such as your Ref No. The only choice you now have is to apply it as a **Type** or an **Instance** parameter.

Leave as **Type** and click **OK**. You've now added the Ref No Parameter. Fill in a value for the 1525 x 762 desk (AB1), 1830 x 610 desk((AB2). Click **OK**. Load back into the project – Overwrite. Select item and Edit Type – it now has a reference.



Note:

Everyone should share the same Shared Parameter file. Avoid creating and using multiple. Shared Parametric files. Each Parameter has a unique ID. You can end up with two Parameters having the same name.