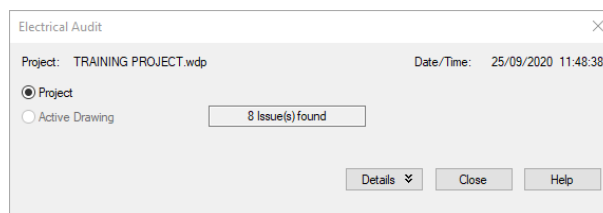


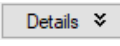
Electrical Audit

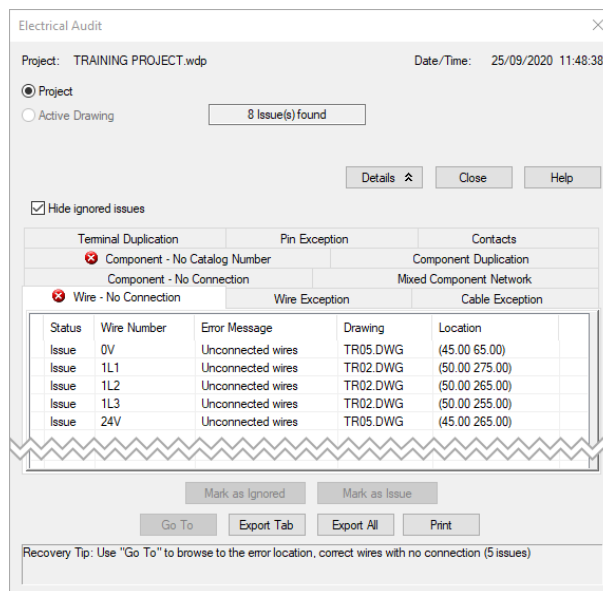
AutoCAD Electrical

AutoCAD® Electrical has a fantastic command which checks for potential electrical issues. AutoCAD® Electrical lists all issues relating to the current activated project. Issues are not necessarily *errors* and it is the users' decision/discretion to choose the most appropriate action if required from the Electrical Audit dialogue.

Select *Reports* ribbon tab > *Schematic* panel >  **Electrical Audit**



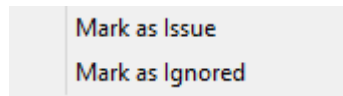
Select  to expand the dialogue and show specific details:

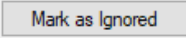
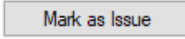


Doubling clicking on one of the issues will take you to the issue within the project. You can *edit* the issue whilst still maintaining the *Electrical Audit* dialogue.



If you right click on an issue, you can mark the issue as an issue or to be ignored.



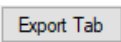
Or you can highlight a single or multiple issue and select the  or .

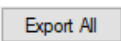
Issues that have been marked as ignored can be filtered out of the list by selecting:

Hide Ignored Issues

The *Electrical Audit* stays active when you go from one drawing to another.

You can select *Active Drawing* to reduce the list of issues just to the specific activated drawing.

 *Export Tab* outputs only the active tab e.g. Wire Exception as a text file.

 *Export All* exports the complete audit report as a text file.

Select  after the necessary actions have been performed.



These commands are excellent for checking for mistakes within your project. For more information on error checking please refer to www.cadlinecommunity.co.uk