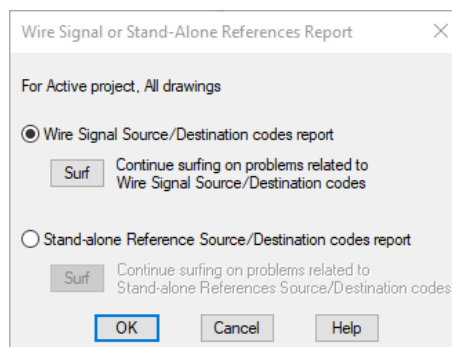


# Signal Error List

## AutoCAD Electrical

The signal error list runs a report that lists all the signal source and destinations used on the set of the project drawings. It provides an exception report list that highlights problem areas such as a destination signal with no source found, or a source signal that does not tie to a destination. It's extremely useful when analysing your connections especially on a larger project. You can surf to the specific problems to analyse the potential exceptions.

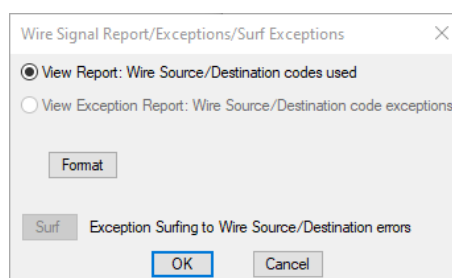
Select *Reports* ribbon tab > *Schematic* pane >  **Signal Error/List**



- Ⓐ Wire Signal Source/Destination codes report  
(source and destination arrows associated with a wire/cable)
- Ⓑ Stand-alone Reference Source/Destination codes report  
(standalone source and destination arrows not associated with a wire/cable)

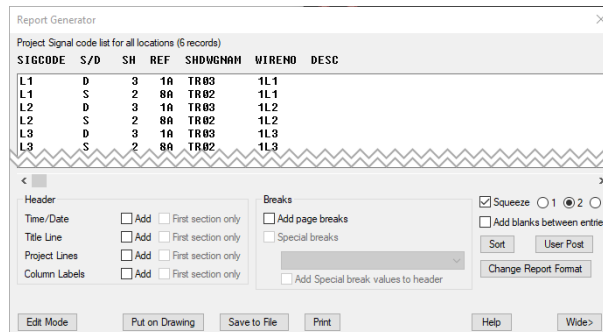
Select Ⓐ *Wire Signal Source/Destination codes report* (to view all associations)

Select 

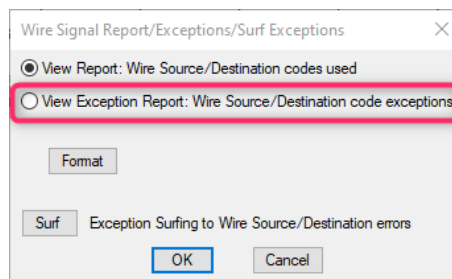


Select 

The source and destination associations are displayed:



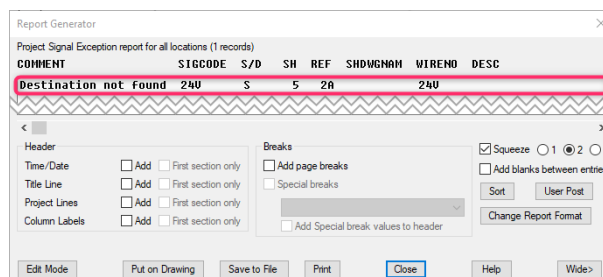
If you do have either a source or destination that isn't paired, then the dialogue will show the option otherwise it will be greyed out:



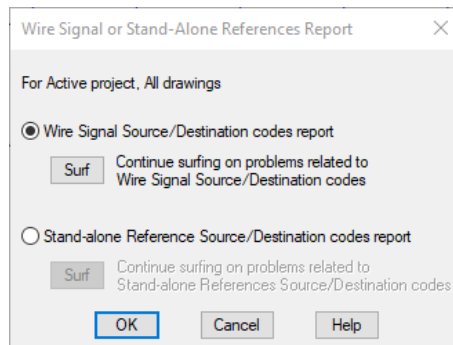
Select  *View Exception Report* to view the potential exceptions

Select

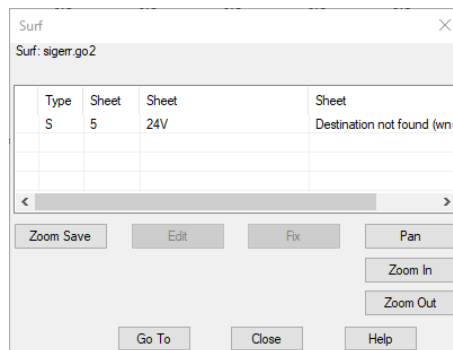
The exceptions will be reported on:



If you come out of the report dialogue and run the command again, you are able to *Surf* to the exceptions within the project drawing set:



Select 



To *Surf* to the exception, either double click on the exception row within the dialogue or highlight the row and select 